

**RFXpress® RFX100**  
**Advanced RF/IF/IQ Waveform Creation and Editing Software**  
**for the AWG5000/B & AWG7000/B Series Signal Generators**  
**Quick Start User Manual**



077-0159-03

**Tektronix**



**RFXpress® RFX100**  
**Advanced RF/IF/IQ Waveform Creation and Editing Software**  
**for the AWG5000/B & AWG7000/B Series Signal Generators**  
**Quick Start User Manual**

Copyright © Tektronix. All rights reserved. Licensed software products are owned by Tektronix or its subsidiaries or suppliers, and are protected by national copyright laws and international treaty provisions.

Tektronix products are covered by U.S. and foreign patents, issued and pending. Information in this publication supersedes that in all previously published material. Specifications and price change privileges reserved.

TEKTRONIX and TEK are registered trademarks of Tektronix, Inc.

MATLAB®. Copyright 1984 - 2007 The MathWorks, Inc.

RFXpress® RFX100 is a registered trademark of Tektronix, Inc.

## **Contacting Tektronix**

Tektronix, Inc.  
14200 SW Karl Braun Drive  
P.O. Box 500  
Beaverton, OR 97077  
USA

For product information, sales, service, and technical support:

- In North America, call 1-800-833-9200.
- Worldwide, visit [www.tektronix.com](http://www.tektronix.com) to find contacts in your area.

## Warranty

Tektronix warrants that the media on which this software product is furnished and the encoding of the programs on the media will be free from defects in materials and workmanship for a period of three (3) months from the date of shipment. If any such medium or encoding proves defective during the warranty period, Tektronix will provide a replacement in exchange for the defective medium. Except as to the media on which this software product is furnished, this software product is provided "as is" without warranty of any kind, either express or implied. Tektronix does not warrant that the functions contained in this software product will meet Customer's requirements or that the operation of the programs will be uninterrupted or error-free.

In order to obtain service under this warranty, Customer must notify Tektronix of the defect before the expiration of the warranty period. If Tektronix is unable to provide a replacement that is free from defects in materials and workmanship within a reasonable time thereafter, Customer may terminate the license for this software product and return this software product and any associated materials for credit or refund.

THIS WARRANTY IS GIVEN BY TEKTRONIX WITH RESPECT TO THE PRODUCT IN LIEU OF ANY OTHER WARRANTIES, EXPRESS OR IMPLIED. TEKTRONIX AND ITS VENDORS DISCLAIM ANY IMPLIED WARRANTIES OF MERCHANTABILITY OR FITNESS FOR A PARTICULAR PURPOSE. TEKTRONIX' RESPONSIBILITY TO REPLACE DEFECTIVE MEDIA OR REFUND CUSTOMER'S PAYMENT IS THE SOLE AND EXCLUSIVE REMEDY PROVIDED TO THE CUSTOMER FOR BREACH OF THIS WARRANTY. TEKTRONIX AND ITS VENDORS WILL NOT BE LIABLE FOR ANY INDIRECT, SPECIAL, INCIDENTAL, OR CONSEQUENTIAL DAMAGES IRRESPECTIVE OF WHETHER TEKTRONIX OR THE VENDOR HAS ADVANCE NOTICE OF THE POSSIBILITY OF SUCH DAMAGES.

[W9b – 15AUG04]



# Table of Contents

General Safety Summary .....	iii
Preface .....	v
Key Features .....	v
Documentation .....	vi
Conventions Used in This Manual.....	vi
Installation.....	1
Starting the Software.....	1
Closing the Software.....	1
Software Upgrades.....	1
Using the Software .....	3
Getting Acquainted with the Software .....	3
Generating a Single Carrier Signal.....	3
Generating a Multi-Carrier RF Signal .....	5
Replay a Captured Waveform to Test Receivers .....	10
Calibrating a Generic Signal.....	14
Applying Calibration to an Imported Custom Signal.....	20
Characterizing a Low-pass Wideband Filter (DUT).....	25
Creating a UWB Waveform to Test Your Receivers .....	30
Application Examples: Generic Signal.....	33
Simulating a MultiPath Environment for a Generic Signal.....	33
Creating a Hopping Waveform to Test SIGINT Receivers.....	35
S-Parameter Emulation of a High Pass Filter.....	38
Application Examples: UWB-WiMedia.....	42
Characterize Receiver Design for Receiver Verification and Stress Test.....	42
Using Calibration to Increase the Flatness of a UWB Signal Path to the DUT.....	44
Introducing Real-World Impairments in a UWB Signal .....	47
Application Examples: Radar .....	49
Generating an LFM Waveform with Coherent Carrier for Pulse Compression Radar.....	49
Generating a Hopping Radar Waveform: Creating a Pulse-to-Pulse Frequency Hopping Signal.....	52
Creating Costa's Modulation.....	56
Creating a Radar Waveform using Staggered PRI for Better Range Ambiguity .....	59
Simulating Multiple Targets for Radar Receiver Testing (Different Pulse Groups) .....	61
Simulating a Scanning Antenna with a Gaussian Shape.....	65
Index .....	





# General Safety Summary

Review the following safety precautions to avoid injury and prevent damage to this product or any products connected to it.

To avoid potential hazards, use this product only as specified.

*Only qualified personnel should perform service procedures.*

While using this product, you may need to access other parts of a larger system. Read the safety sections of the other component manuals for warnings and cautions related to operating the system.

## To Avoid Fire or Personal Injury

**Connect and Disconnect Properly.** Do not connect or disconnect probes or test leads while they are connected to a voltage source.

**Ground the Product.** This product is indirectly grounded through the grounding conductor of the mainframe power cord. To avoid electric shock, the grounding conductor must be connected to earth ground. Before making connections to the input or output terminals of the product, ensure that the product is properly grounded.

**Observe All Terminal Ratings.** To avoid fire or shock hazard, observe all ratings and markings on the product. Consult the product manual for further ratings information before making connections to the product.

**Power Disconnect.** The power cord disconnects the product from the power source. Do not block the power cord; it must remain accessible to the user at all times.

**Do Not Operate Without Covers.** Do not operate this product with covers or panels removed.

**Do Not Operate With Suspected Failures.** If you suspect that there is damage to this product, have it inspected by qualified service personnel.

**Avoid Exposed Circuitry.** Do not touch exposed connections and components when power is present.

### Terms in this Manual

These terms may appear in this manual:



---

**WARNING.** *Warning statements identify conditions or practices that could result in injury or loss of life.*

---



---

**CAUTION.** *Caution statements identify conditions or practices that could result in damage to this product or other property.*

---

# Preface

This document is targeted to product users and explains operation and/or installation procedures. It also provides information about features and functions, and applications. This software runs as an integral part of AWG5000/AWG5000B and AWG7000/AWG7000B series arbitrary waveform generators and can also run from an external PC.

You can use RFXpress to:

- Design, debug, and develop wideband wireless communications receivers
- Generate UWB-WiMedia compliant and custom signals
- Generate general purpose digitally modulated IQ, IF, and RF signals

## Key Features

The RFXpress RFX100 is a software product that allows you to create digitally modulated baseband, IF, and RF signals that can be generated through arbitrary waveform generators (AWG). This software allows you to:

- Define baseband I and Q signals using various modulation schemes
- Create single- and multi-carrier signals where each carrier is independently defined
- Apply impairments such as quadrature error and imbalance or non-linear impairments
- Add interferences during waveform creation
- Remotely connect to Tektronix oscilloscopes and to an Agilent Performance Signal Generator (PSG®)
- Remotely configure a Tektronix real-time spectrum analyzer and import I and Q trace data
- Characterize a DUT and provide S-parameter emulation of RF components
- Create multiple layers of modulation using subcarrier multiplexing

### UWB-WiMedia

- Direct RF generation of WiMedia BG1 and BG2 waveforms
- Generate IQ and IF waveforms including band hopping for all band groups
- Define the IF frequency, including TFC pattern
- Generate WiMedia signals for MAC and PHY layers
- Create UWB-WiMedia correction files, which can be automatically applied as compensation to accurately generate signals
- Use Gated Noise to define noise profiles for each section of the UWB packet
- Create tone nulling with intermediate values (–40 dB to +20 dB) for OFDM carrier mapping

## Radar

- Create single or multiple pulse groups forming a pulse train
- Define each pulse group independently or add different pulse groups to simulate simultaneous multiple target returns
- Create different predefined pulse shapes including user defined shapes for a pulse group
- Display a dynamic pulse plot showing the pulse shape, droop, and ripple parameters
- Have pulse-to-pulse hopping within a pulse group
- Apply impairments like Edge Jitter, Width Jitter, Overshoot, Ripple and Droop on a pulse group
- Apply different modulation schemes including user defined modulation
- Use the AWG sequence mode to optimize the memory and create large numbers of pulses
- Define antenna beam profile and simulate target returns
- Define a staggered PRI with ramp and user-defined profiles, and add up to ten multi-paths

## Documentation

RFXpress RFX100 Online Help, English	Tektronix part number 076-0081-XX
RFXpress RFX100 User Manual, English, (PDF)	Tektronix part number 077-0045-XX
RFXpress RFX100 Quick Start User Manual, English (PDF)	Tektronix part number 077-0159-XX
RFXpress RFX100 Installation Manual, English (PDF)	Tektronix part number 077-0160-XX

## Conventions Used in This Manual

When steps require a sequence of selections using the software interface, the ">" delimiter marks each transition between a menu and an option. For example, File > Save.

The document MultiBand OFDM Physical Layer Specification version 1.2 by WiMedia Alliance is referred to as the "WiMedia standard" or "WiMedia specification".

The term "DUT" refers to a device under test.

The terms "signal" and "waveform" are used interchangeably in this manual.

# Installation

For information on how to install this software, refer to the *RFXpress Installation Manual*, Tektronix part number 077-0160-XX.

## Starting the Software

Start the software in either of the following ways:

- From **Start > Program Files > Tektronix RFXpress**, click RFXpress.
- Double-click the RFXpress icon on your desktop.

## Closing the Software

Click **File > Exit** to close the software.

## Software Upgrades

Periodic software upgrades may become available. The software is operational only if you have a valid option key for the specific instrument model and serial number.

To check for upgrades:

1. Go to [www.tektronix.com/software](http://www.tektronix.com/software).
2. Enter the product name (RFXpress).



# Using the Software

The procedures in this section show you how to use the software to create, compile, and graph signals.

## Getting Acquainted with the Software

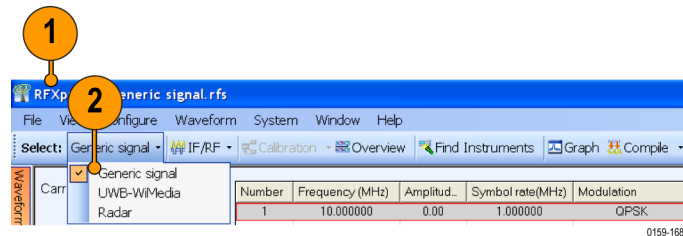
Use the keyboard or mouse to make selections in the software.

Use menus, toolbars, check boxes, and on-screen buttons to control the software functions. Use Microsoft Windows techniques to navigate menus and select or clear check boxes.

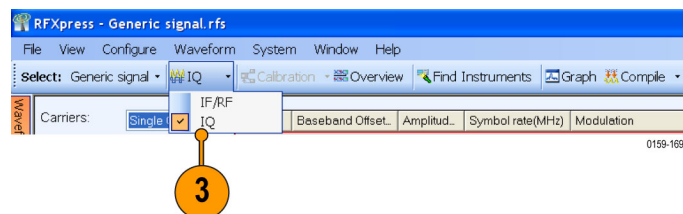
## Generating a Single Carrier Signal

This section shows you a step-by-step procedure for creating a single carrier QPSK baseband signal.

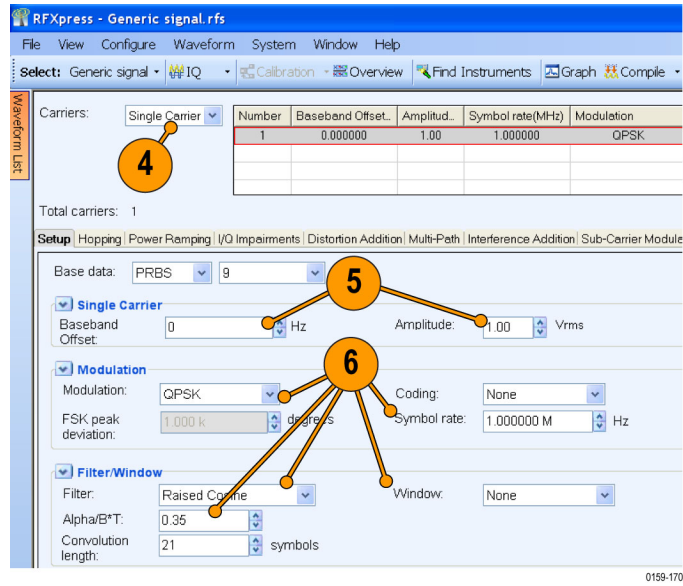
1. Start RFXpress.
2. From the toolbar, click **Select > Generic signal**.



3. Set the signal type to **IQ**.



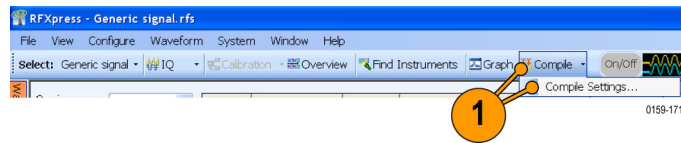
4. Click **Carriers > Single Carrier**.
5. Select the carrier and set the following:
  - **Baseband Offset** to 0 Hz.
  - **Amplitude** to 1 Vrms.
6. Ensure that the following parameters are set:
  - **Modulation** is QPSK.
  - **Filter** is Raised Cosine.
  - **Symbol rate** is 1 MHz.
  - **Alpha/B\*T** is 0.35.
  - **Window** is None.



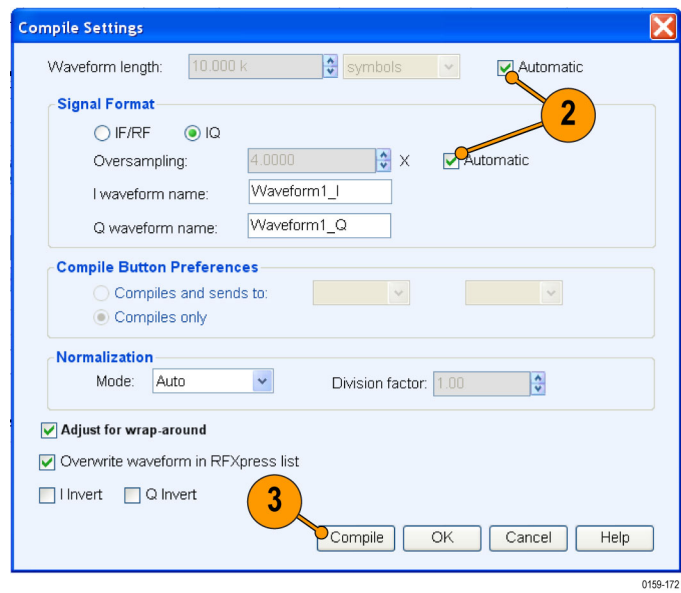
## Compiling a Signal

Follow these steps to compile and generate a signal using the parameters that you just defined.

1. From the toolbar, click **Compile > Compile Settings**.

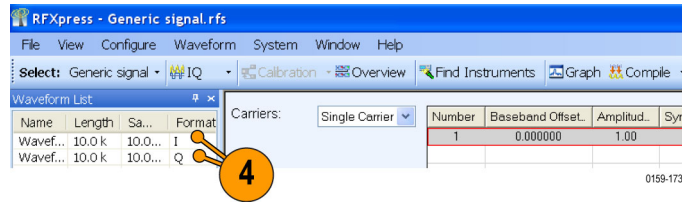


2. Retain the default values as they are. Ensure that the **Automatic** options are selected.
3. Click **Compile**.





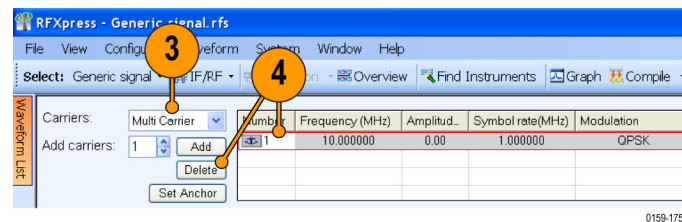
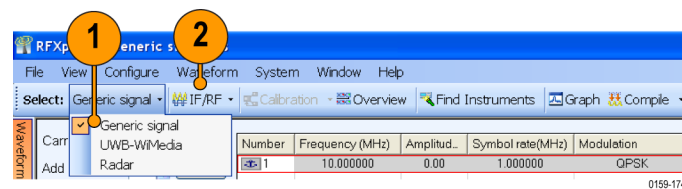
- The compiled waveform is displayed in the waveform list.



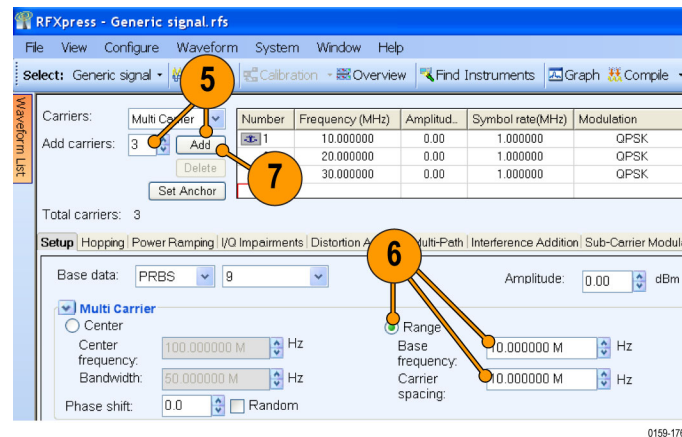
**NOTE.** If the waveform list is not visible, click **Window > Waveform List** to view it.

## Generating a Multi-Carrier RF Signal

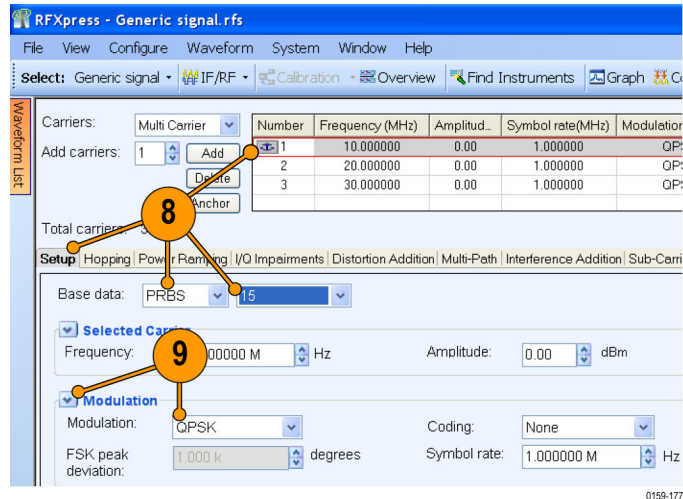
- From the toolbar, click **Select > Generic signal**.
- Select the signal type as **IF/RF**.
- Select **Multi Carrier**.
- You can either add carriers directly or delete the existing carrier and add new ones. Select the carrier in the table and click **Delete**.



- Click **Add carriers** and type 3.
- Click **Range**. Set the **Base Frequency** to 10 M and the **Carrier Spacing** to 10 M.
- Click **Add**.



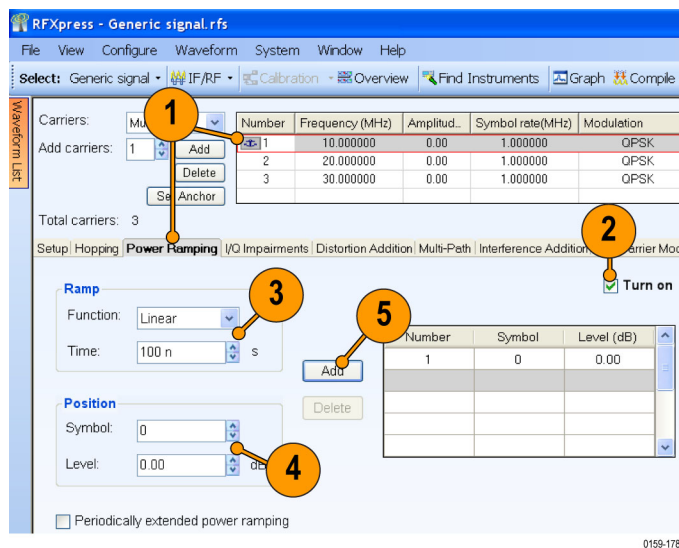
8. Select the first carrier from the table. In the **Setup** tab, set the **Base data** to PRBS and select 15 from the adjacent field.
9. Set the **Modulation** for the carrier to QPSK.



10. Repeat steps 8 and 9 for the remaining carriers, setting the **Base data** to PRBS 21 and PRBS 7, and **Modulation** to QPSK.

### Adding Power Ramping, I/Q Impairments, and Interference

1. Select the first carrier from the table. Select the **Power Ramping** tab.
2. Select **Turn on**.
3. Set the Ramp parameters:
  - **Function** to Linear.
  - **Time** to 100 ns.
4. Set the Position parameters:
  - **Symbol** to 0.
  - **Level** to 0.00.
5. Click **Add**.



6. Repeat steps 4 and 5 two more times, adding these parameters:

- Symbol = 100
  - Level = -60 dB
- and
- Symbol = 200
  - Level = 0 dB

RFXpress - Generic signal.rfs

File View Configure Waveform System Window Help

Select: Generic signal IF/RF Calibration Overview Find Instruments Graph Compile

Carriers: Multi Carrier

Number	Frequency (MHz)	Amplitud.	Symbol rate(MHz)	Modulation
1	10.000000	0.00	1.000000	QPSK
2	20.000000	0.00	1.000000	QPSK
3	30.000000	0.00	1.000000	QPSK

Add carriers: 1 Add Delete Set Anchor

Total carriers: 3

Setup Hopping Power Ramping I/Q Impairments Distortion Addition Multi-Path Interference Addition Sub-Carrier Mod

**Power Ramping** Turn on

Ramp Function: Linear Time: 100 n s Add Delete

Position Symbol: 200 Level: 0.00 dB Add Delete

Number	Symbol	Level (dB)
1	0	0.00
2	100	-60.00
3	200	0.00

Periodically extended power ramping

0159-179

7. Select the second carrier from the table. Select the **I/Q Impairments** tab.

8. In the Carrier Leakage group, select **Turn on**. Set the following parameters:

- I to 5.0.
- Q to 5.0.

RFXpress - Generic signal.rfs

File View Configure Waveform System Window Help

Select: Generic signal IF/RF Calibration Overview Find Instruments Graph Compile

Carriers: Multi Carrier

Number	Frequency (MHz)	Amp
1	10.000000	0.
2	20.000000	0.
3	30.000000	0.

Add carriers: 1 Add Delete Set Anchor

Total carriers: 3

Setup Hopping Power Ramping **I/Q Impairments** Distortion Addition Mu

**Hardware Skew** Turn on

Channel 1: 100.000 n s

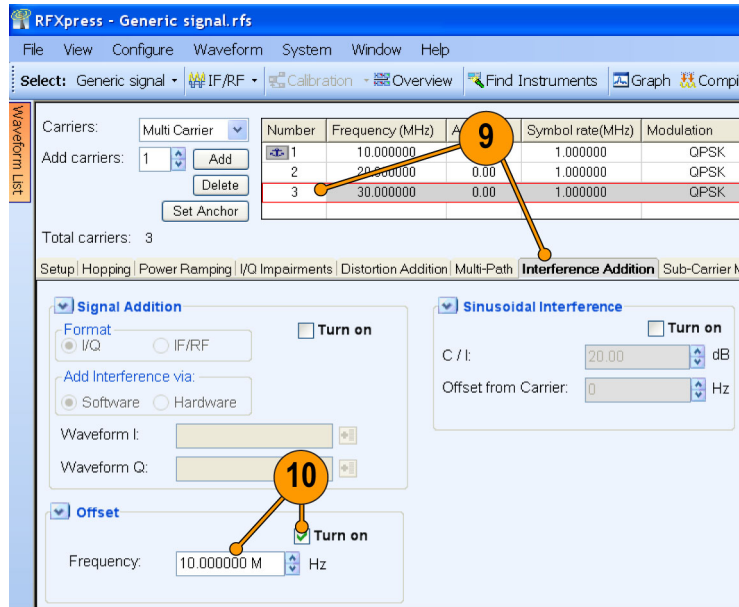
Channel 2: 100.000 n s

**Carrier Leakage** Turn on

I: 5.0 % Q: 5.0 %

0159-180

9. Select the third carrier from the table. Select the **Interference Addition** tab.
10. In the Offset group, select **Turn on**. Set the **Frequency** to 10 M.



0159-181

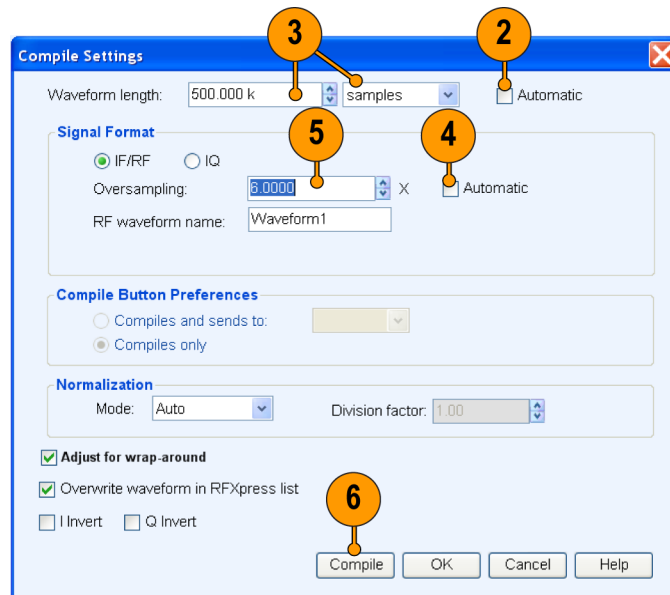
## Compile Settings and Compile

1. From the toolbar, click **Compile > Compile Settings**.



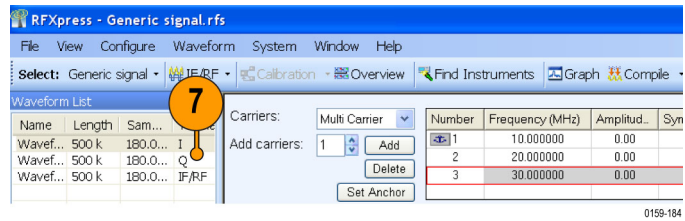
0159-182

2. Clear **Automatic**.
3. Set the **Waveform length** to 500 K and the units to samples.
4. Clear **Automatic**.
5. Set the **Oversampling** to 6.00.
6. Click **Compile**.



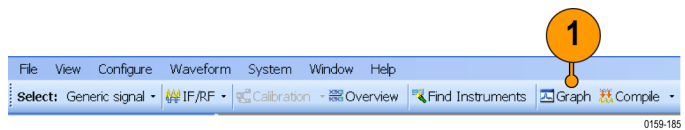
0159-183

- The compiled waveform is displayed in the waveform list.

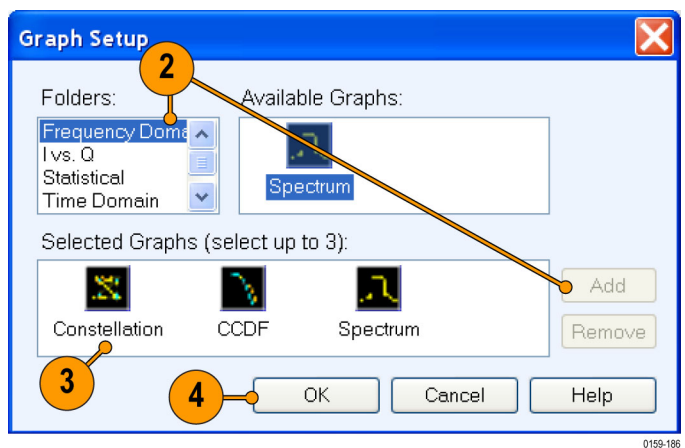


## Previewing Graphs

- From the toolbar, click **Graph**.

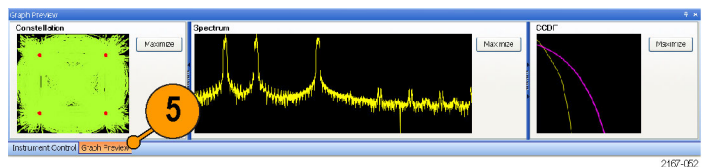


- In Graph Setup, select the folder and click **Add** to add the following graphs:
  - Frequency Domain: Spectrum.
  - I Vs Q: Constellation.
  - Statistical: CCDF.



- The graphs are added to the Selected Graphs.
- Click **OK**.

- Click **Graph Preview** at the lower left of the screen to view the graphs.

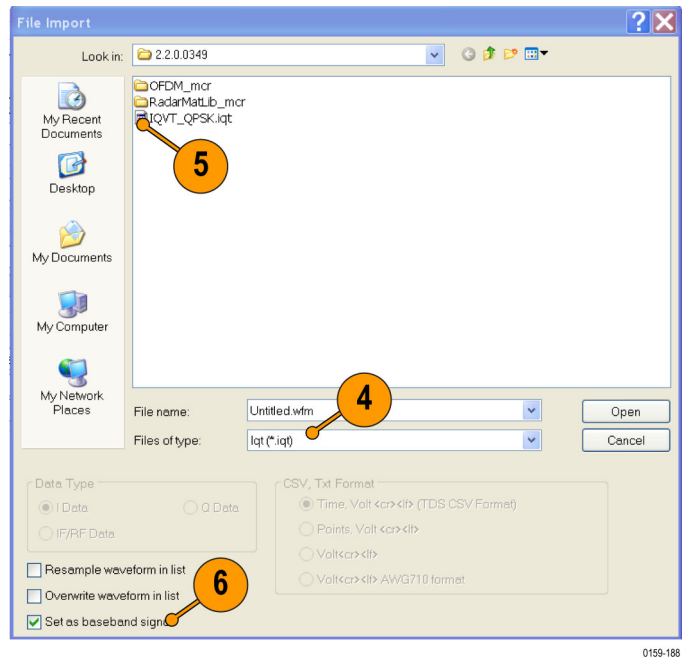
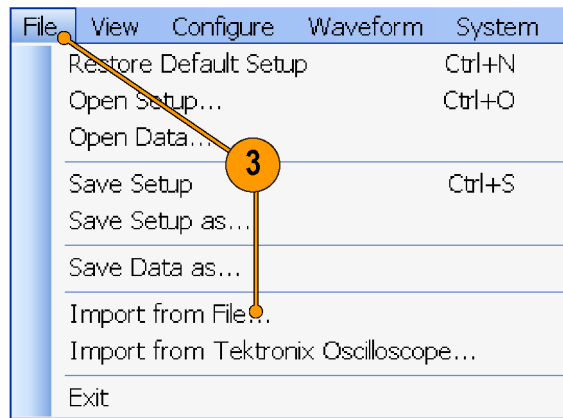
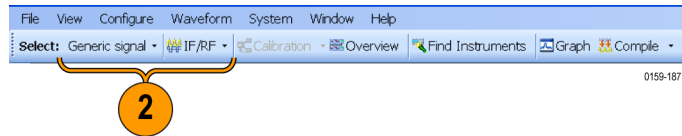


## Replay a Captured Waveform to Test Receivers

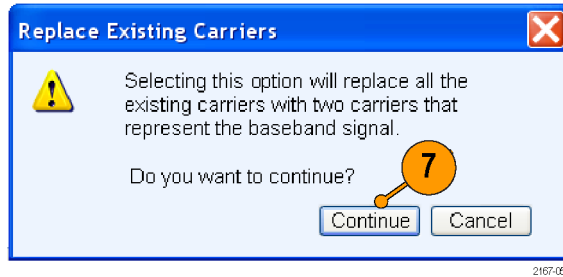
You can capture a real-world signal in a real-time spectrum analyzer and play it back in multiple locations to test your DUTs.

### Import an RTSA File

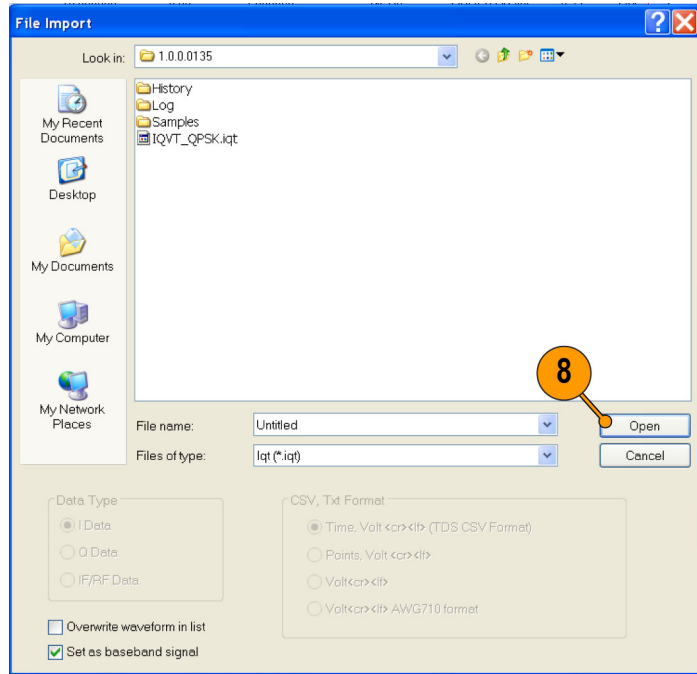
1. Start RFXpress.
2. Ensure that the selected application is set to **Generic signal** and the signal type is **IF/RF**.
3. From the menu, click **File > Import from File**.
4. Select **iq1** in the **Files of type** field.
5. Select an **iq1** file.
6. Select **Set as baseband signal**.



7. A message appears. Click **Continue**.

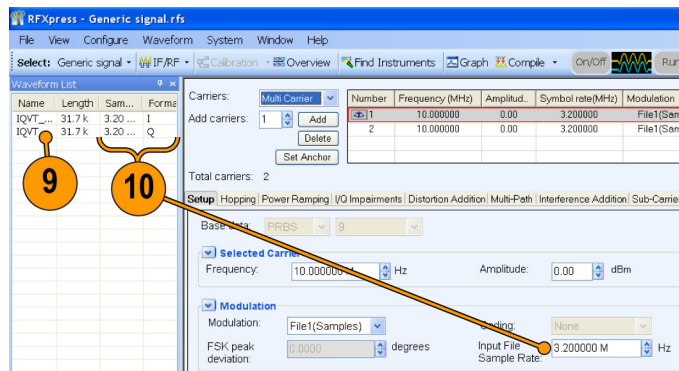


8. Click **Open**.



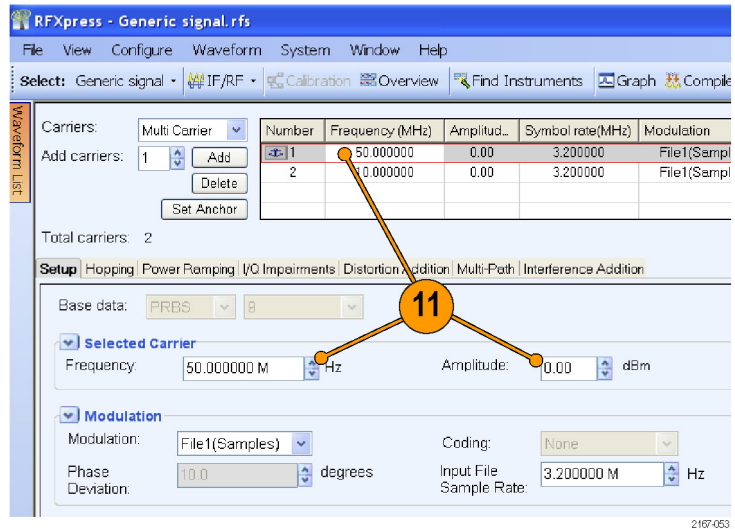
9. The waveform list displays the I and Q signals.

10. Note that the **Input File Sample Rate** automatically takes the value with which the iqt file was created.



11. Select the first carrier and set the following:

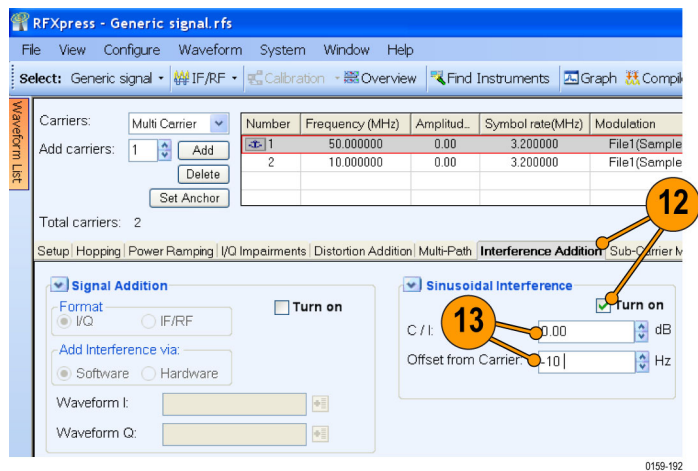
- **Frequency** to 50 M.
- **Amplitude** to 0 dBm.



12. Click **Interference Addition**. In the Sinusoidal Interference group, select **Turn on**.

13. Set the following:

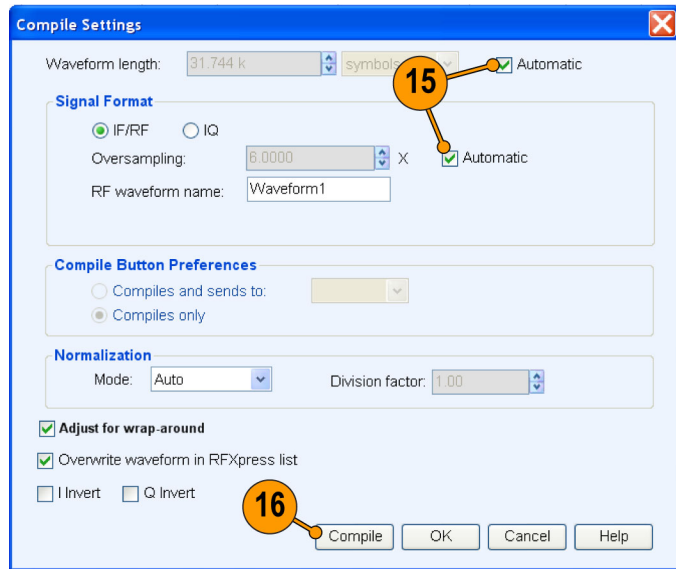
- **C/I** to 0 dB.
- **Offset from Carrier** to -10 M.



14. Select the second carrier and repeat steps 11 through 13.

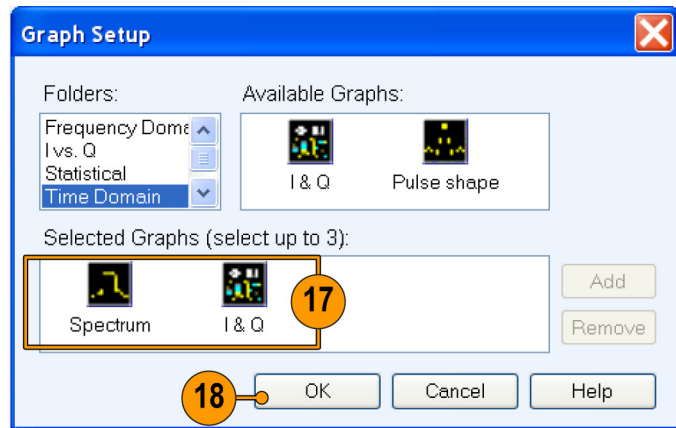


15. Click **Compile > Compile Settings**. Ensure that **Automatic** is selected.
16. Click **Compile**. The software uses the default compile settings to generate the waveform.



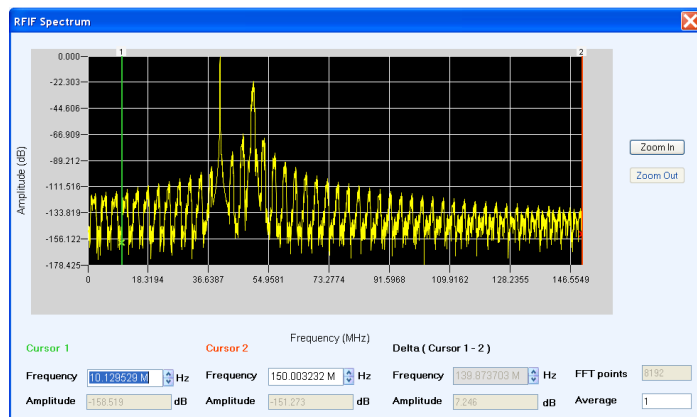
0159-193

17. Add the following graphs in Graph Setup:
  - Frequency Domain: Spectrum.
  - Time Domain: I & Q.
18. Click **OK**.



0159-194

19. The Spectrum graph is as shown.



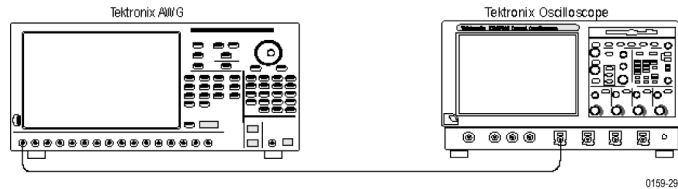
## Calibrating a Generic Signal

When creating signals for testing wideband receivers, it is important that the test equipment generate signals with flat frequency and linear phase response. As the signal bandwidth is increased, because of the DAC roll-off and bandwidth limitation of the arbitrary waveform generator, the signal that is created does not have flat frequency and linear phase response. Calibration (predistortion) is applied to signals to correct amplitude and phase distortions.

1. Set up the instruments as shown. The instruments must be connected over a LAN.

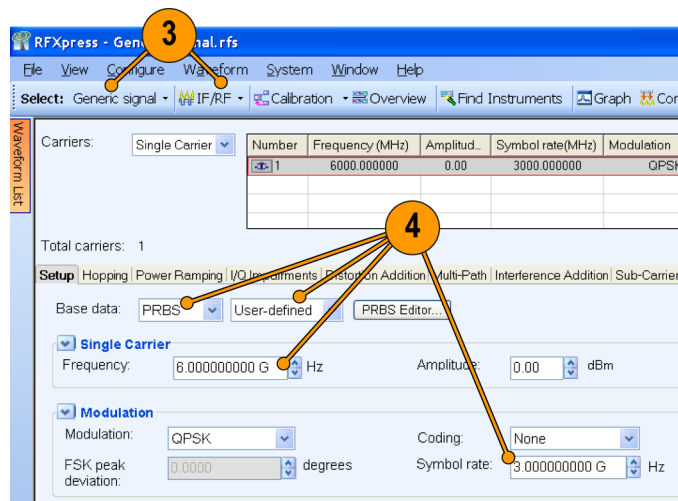
You will need:

- A Tektronix AWG7122B with Option 06, running RFXpress software.
- A Tektronix DPO oscilloscope to capture the signal. Ensure that the oscilloscope is calibrated.
- Connecting cable.



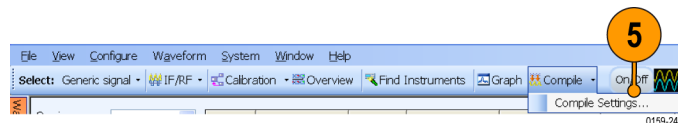
0159-297

2. Start RFXpress.
3. From the toolbar, click **Select > Generic signal** and signal type to IF/RF.
4. For the carrier, set the following:
  - **Base data** to PRBS and User Defined.
  - **Frequency** to 6 GHz.
  - **Symbol rate** to 3 GHz.



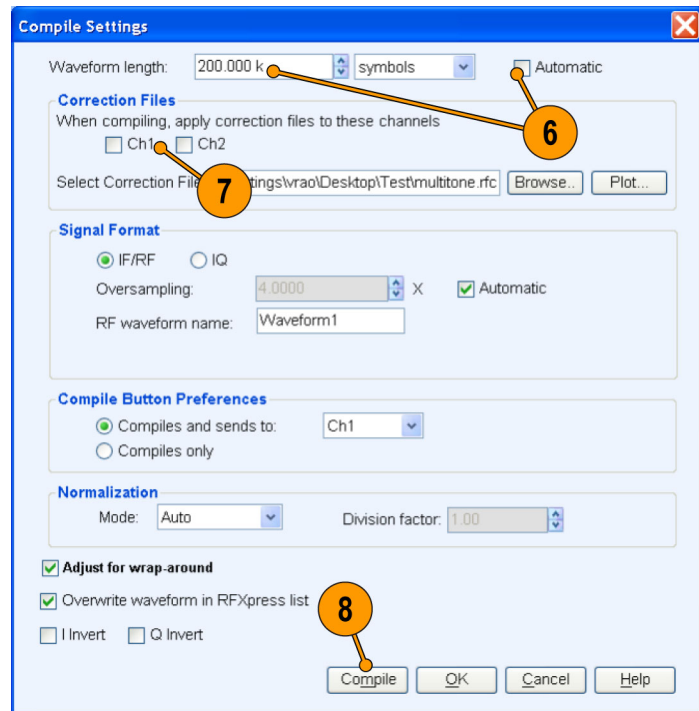
0159-246

5. From the toolbar, click **Compile > Compile Settings**.



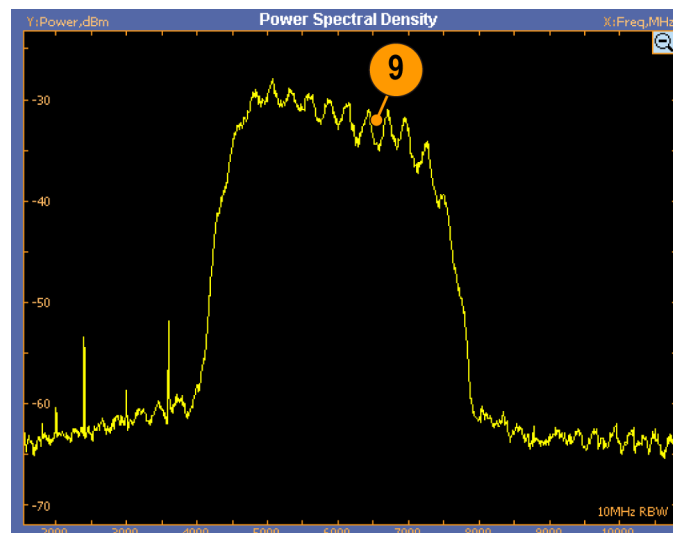
0159-247

6. Disable **Automatic** and set the **Waveform length** to 200 K symbols.
7. Ensure that **When compiling, apply correction files to these channels** is disabled.
8. Click **Compile**.



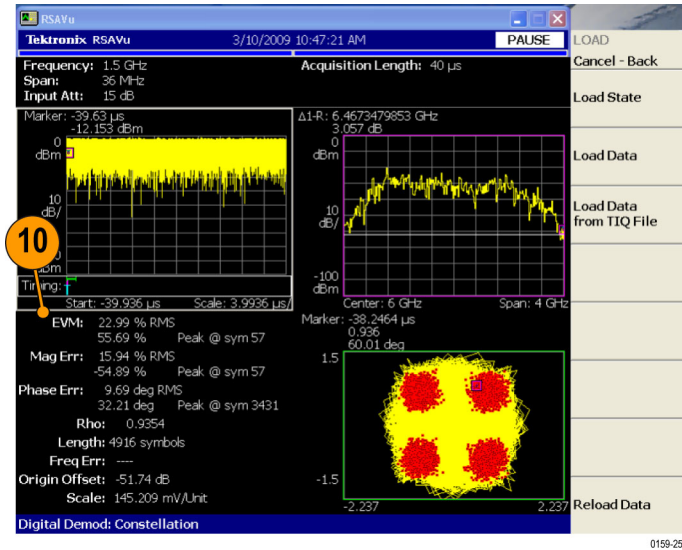
0159-248

9. Capture the waveform in the oscilloscope. The signal spectrum is observed using Tektronix Ultra Wideband Spectral Analysis software.



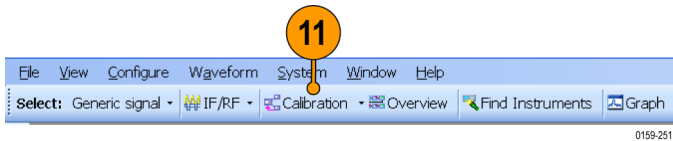
0159-249

- Note that the EVM value before calibration is 22.99%.



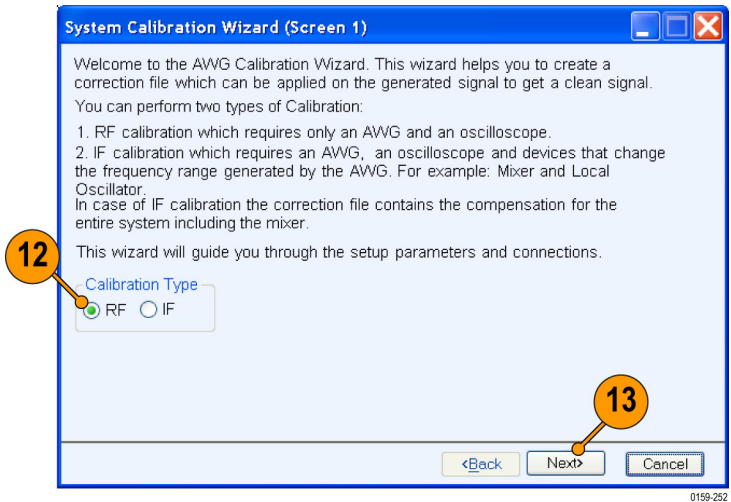
- From the toolbar, click **Calibration**.

**NOTE.** You will be prompted with a message to compile your setup, if you have not already done so. Click Continue to proceed with calibration.



- The Calibration wizard opens. Ensure that the signal type is RF.

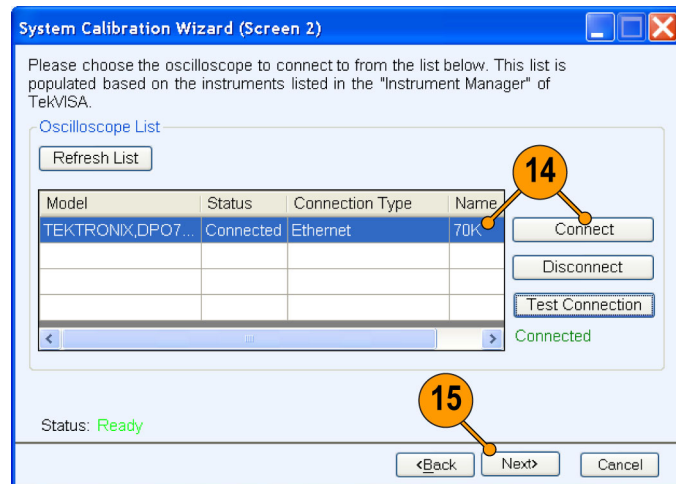
- Click **Next**.



14. The wizard displays a table of instruments connected on the network. Select the DPO oscilloscope and click **Connect**. Note that the status changes to Connected.

**NOTE.** You can click *Test Connection* to test the status of the instrument.

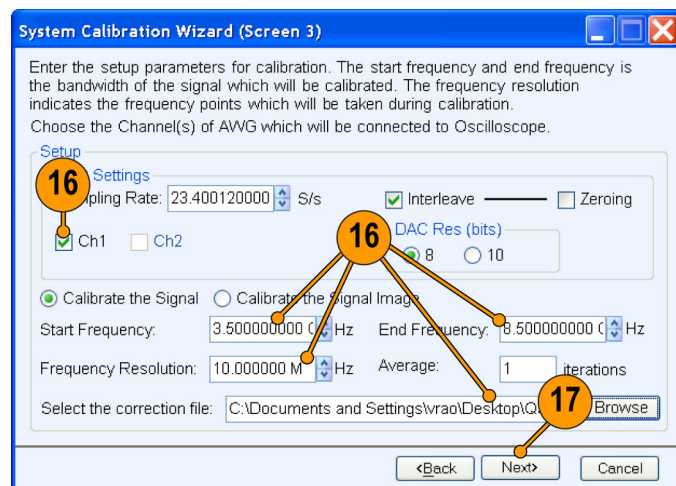
15. Click **Next**.



0159-253

16. Set the following:

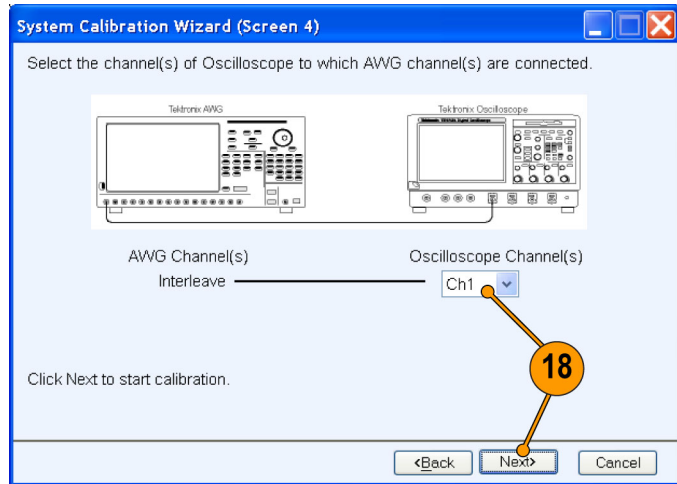
- **Start Frequency** to 3.5 GHz.
- **End Frequency** to 8.5 GHz.
- **Frequency Resolution** to 10 M
- **Select the correction file** name to generate the correction file.
- **Select Ch1.**



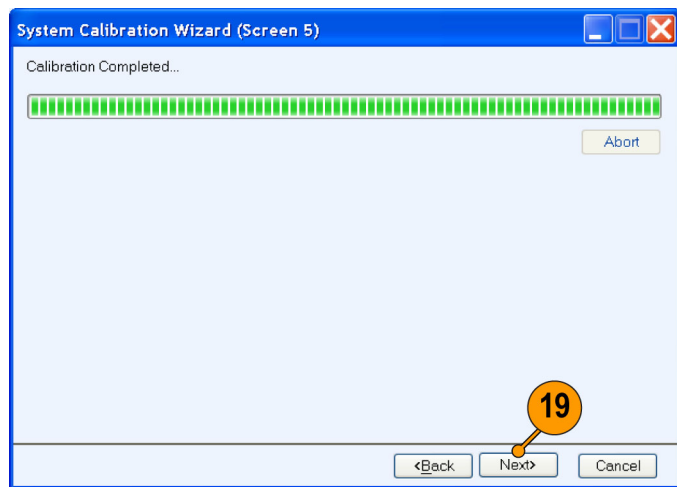
0159-254

17. Click **Next**.

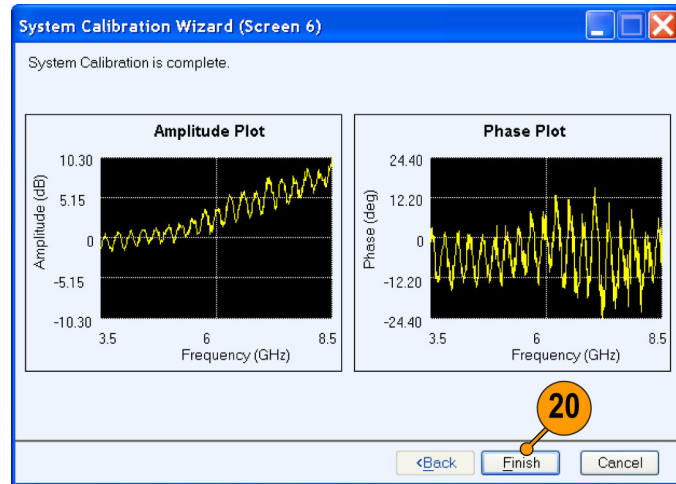
18. Set the oscilloscope channel to Ch1.  
Click **Next** to start calibration.



19. Once the calibration is complete, click **Next** to display the phase and amplitude plots.

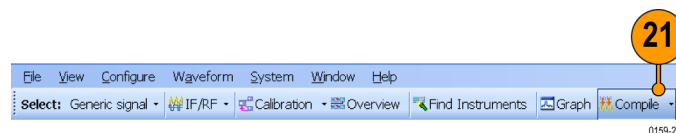


20. Click **Finish** to exit the wizard.



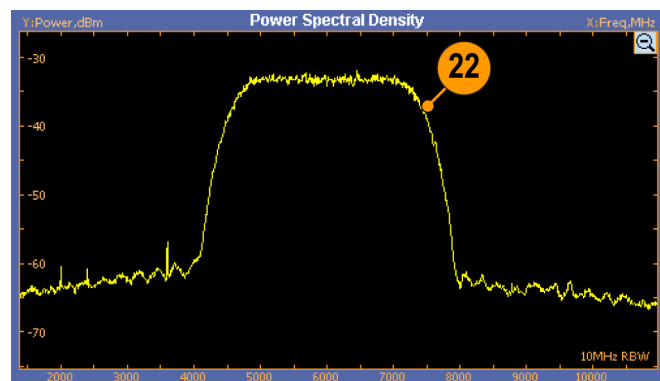
0159-257

21. From the toolbar, click **Compile**.



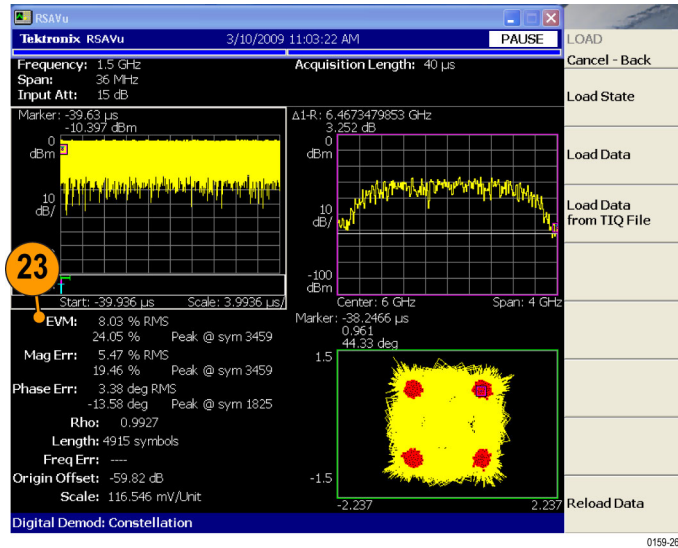
0159-258

22. Capture the calibrated waveform in the oscilloscope. The signal spectrum is observed using Tektronix Ultra Wideband Spectral Analysis software.



0159-259

23. Note that the EVM value after calibration is 8.03%.



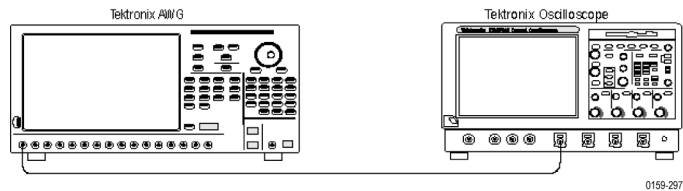
## Applying Calibration to an Imported Custom Signal

In this example, you import an OFDM signal (not created using RFXpress) and calibrate it.

1. Set up the instruments as shown. The instruments must be connected over a LAN.

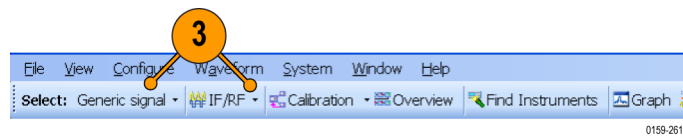
You will need:

- A Tektronix arbitrary waveform generator, such as AWG7122B with Option 06, running RFXpress software.
- A Tektronix DPO oscilloscope to capture the signal. Ensure that the oscilloscope is calibrated.
- Connecting cable.



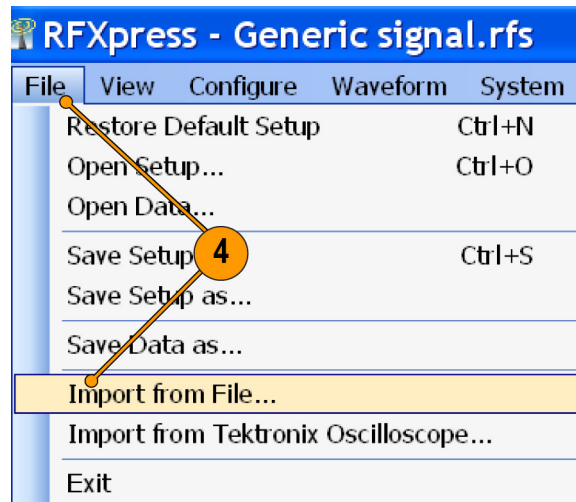
2. Start RFXpress.

3. From the toolbar, click **Select > Generic signal** and set the signal type to IF/RF.





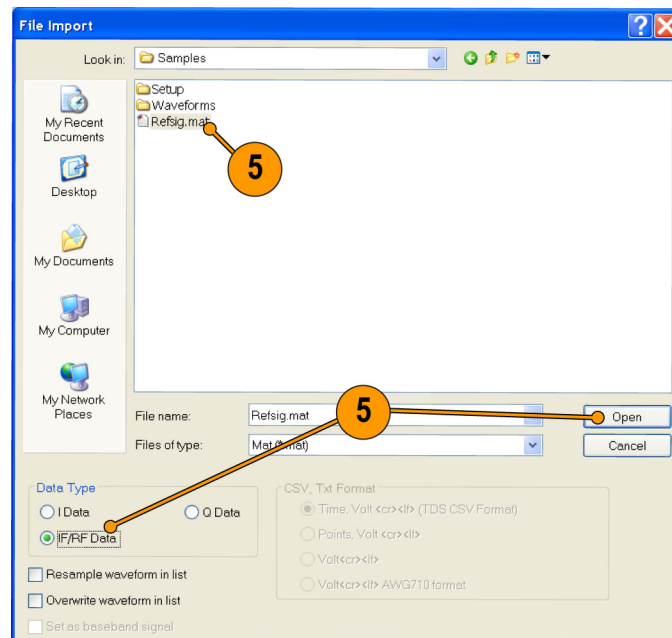
4. Select **File > Import from File**.



0159-158

5. Select a file, for example RefSig.mat. Set the **Data Type** to IF/RF Data and click **Open**. RefSig.mat represents an OFDM signal that cannot be directly generated using RFXpress.

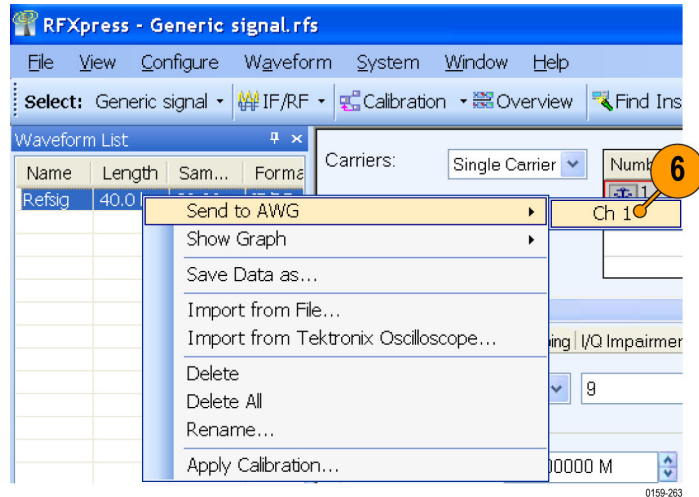
**NOTE.** If you import a .txt file, you are prompted to enter the sampling rate.



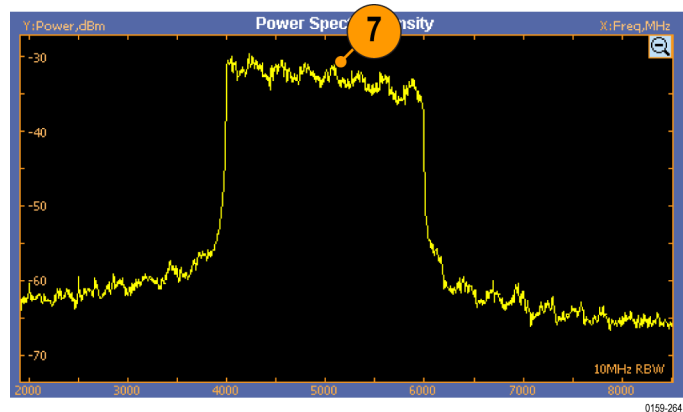
0159-262

6. Select the signal and right-click. Select **Send to AWG > Ch 1**.

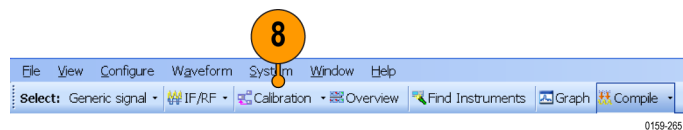
**NOTE.** Ensure that the output of the AWG Interleave channel is connected to Channel 1 of the oscilloscope.



7. Capture the waveform on the oscilloscope and observe the signal spectrum using Tektronix Ultra Wideband Spectral Analysis software. Note that the frequency response is not flat.



8. From the toolbar in RFXpress, click **Calibration**. The calibration wizard opens.



9. Ensure that the signal type is RF and click **Next**.
10. From the table of instruments connected on the network, select a Tektronix oscilloscope and click **Connect**. Note that the status changes to Connected. Click **Next**.

**NOTE.** You can click *Test Connection* to test the status of the instrument.

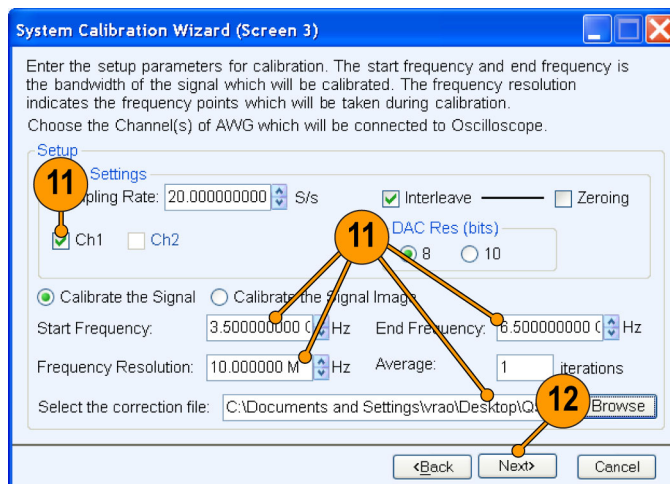
11. Set the following:

- **Start Frequency** to 3.5 GHz.
- **End Frequency** to 6.5 GHz.

**NOTE.** The start and end frequencies correspond to the bandwidth of the imported OFDM signal.

- **Select the correction file** name to generate the correction file.
- **Select Ch1.**

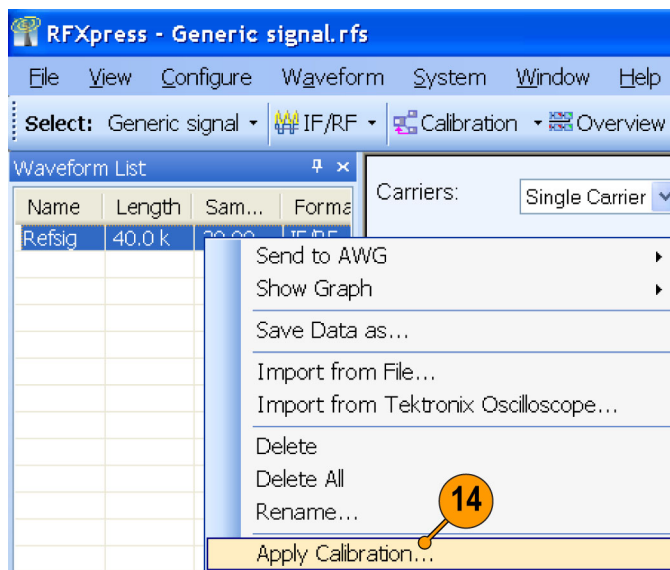
12. Click **Next**.



0159-266

13. Once the calibration is complete, click **Next** to display the amplitude and phase plots. Click **Finish** to exit the wizard.

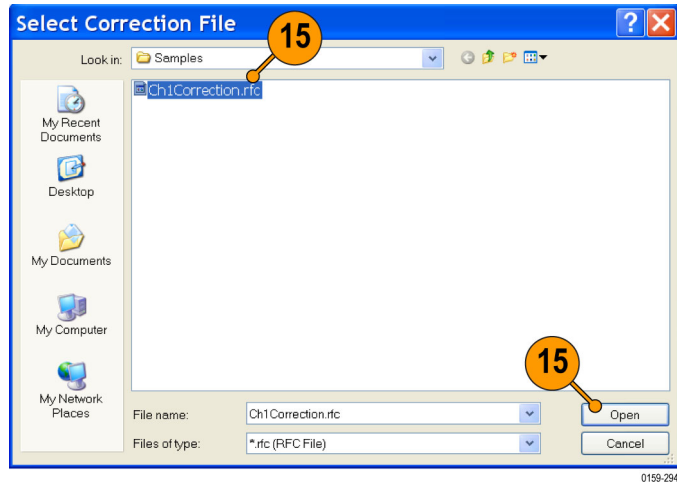
14. In the waveform list, select the signal and right-click. Select **Apply Calibration**.



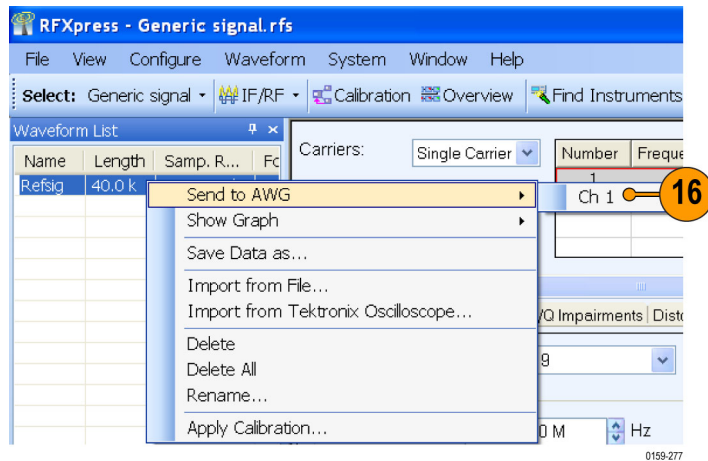
0159-267

15. Select the correction file that was created during calibration and click **Open**.

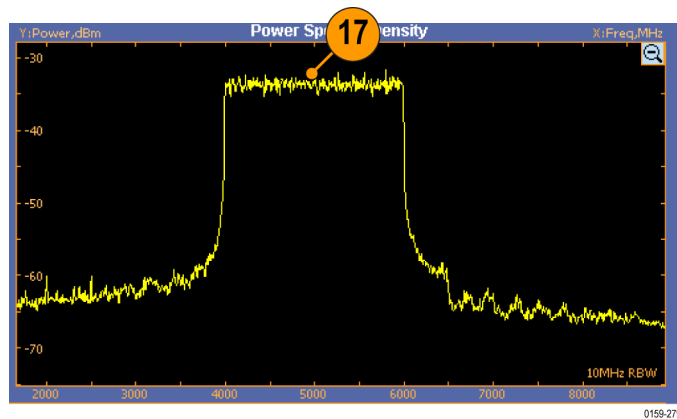
The correction file is applied to the existing imported signal.



16. To see the calibrated signal in the AWG, select the file, right-click, and choose **Send to AWG > Ch 1**.



17. Capture the waveform on the oscilloscope and observe the signal spectrum using Tektronix Ultra Wideband Spectral Analysis software. Note that the frequency response is flat.



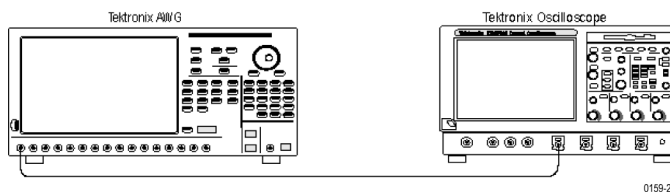
## Characterizing a Low-pass Wideband Filter (DUT)

You can determine the characteristics of a device under test, a low-pass wideband filter in this case, and store these characteristics in a file. You can use this file later as an input to the S-parameter feature.

1. Set up the instruments as shown. The instruments must be connected over a LAN.

You will need:

- A Tektronix AWG7122B with Option 06, running RFXpress software.
- A Tektronix DPO72004 oscilloscope to capture the signal. Ensure that the oscilloscope is calibrated.
- Connecting cable.
- A low-pass wideband filter (the device under test)

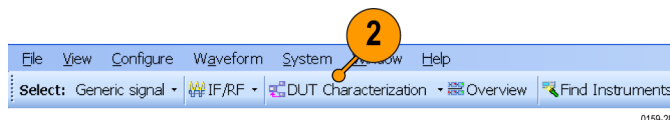


0159-297

**NOTE.** Ensure that the output of the AWG Interleave channel is connected to Channel 1 of the oscilloscope.

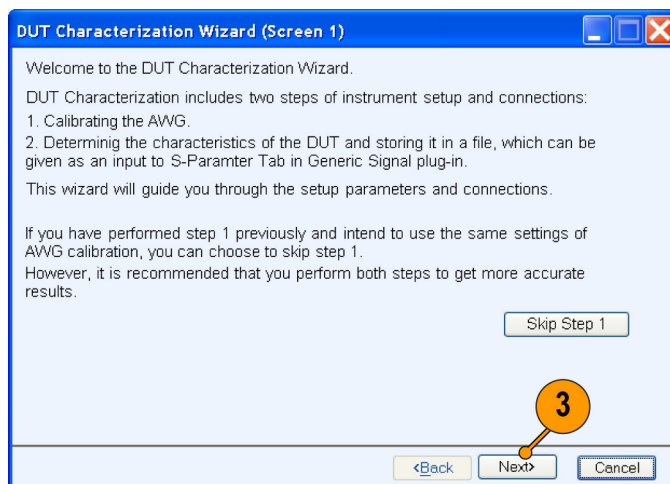
2. Start RFXpress on the AWG7122B with Option 06.

Select **DUT characterization** from the toolbar.



0159-285

3. The DUT Characterization wizard opens. Click **Next**.

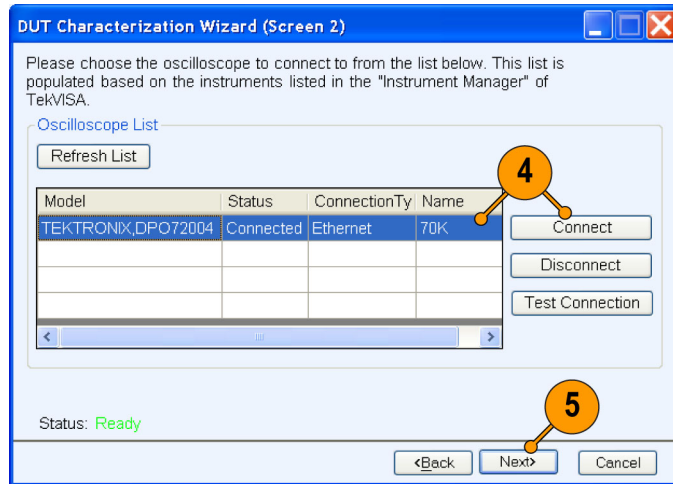


0159-286

4. Select an oscilloscope from the list and click **Connect**.

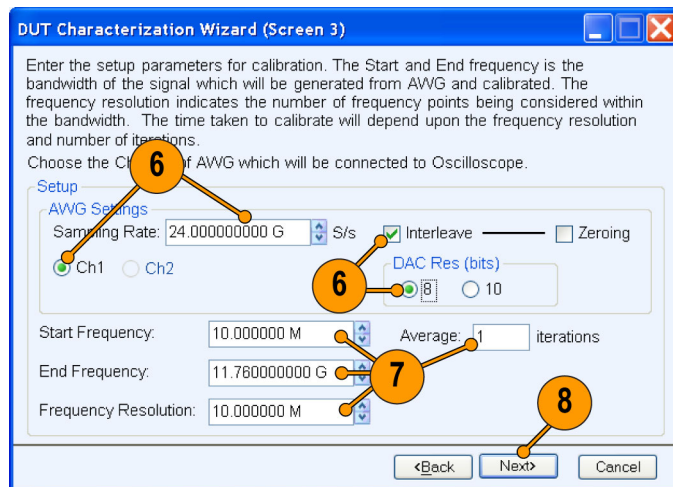
**NOTE.** If you are unable to view a list of connected instruments, click **Refresh List**.

5. Click **Next**.



6. Set the following Setup parameters:

- **Sampling Rate** to 24 GS/s.
- **Enable Interleave**.
- **Select Ch1**.
- **DAC Res** to 8 bits.

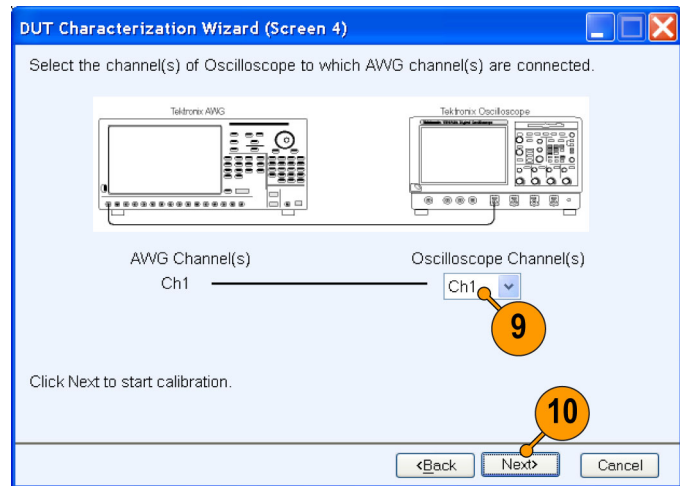


7. Set the other parameters as follows:

- **Start Frequency** to 10 MHz.
- **End Frequency** to 11.76 MHz.
- **Frequency Resolution** to 10 MHz.
- **Average** to 1 iteration.

8. Click **Next**.

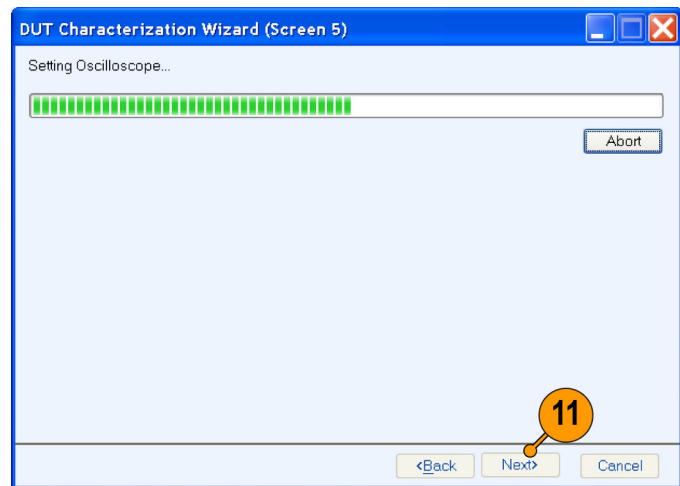
- Select the oscilloscope channel **Ch1** to connect the AWG Interleave channel to.



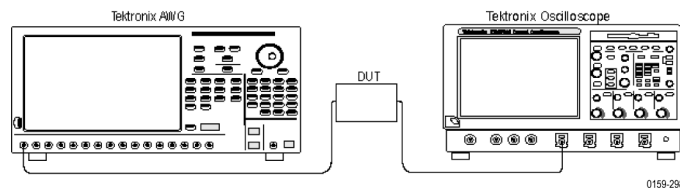
- Click **Next** to start AWG calibration.

**NOTE.** AWG calibration may take up to 10-15 minutes.

- Once calibration is over, click **Next**.

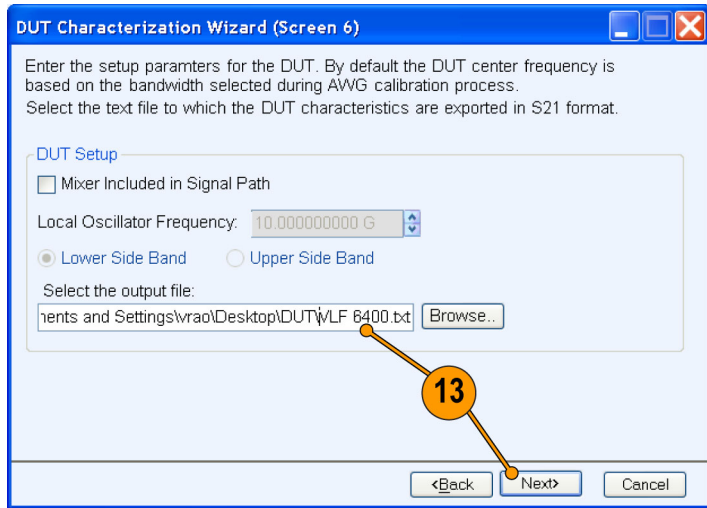


- Add the low-pass wideband filter at channel 1 of the oscilloscope.



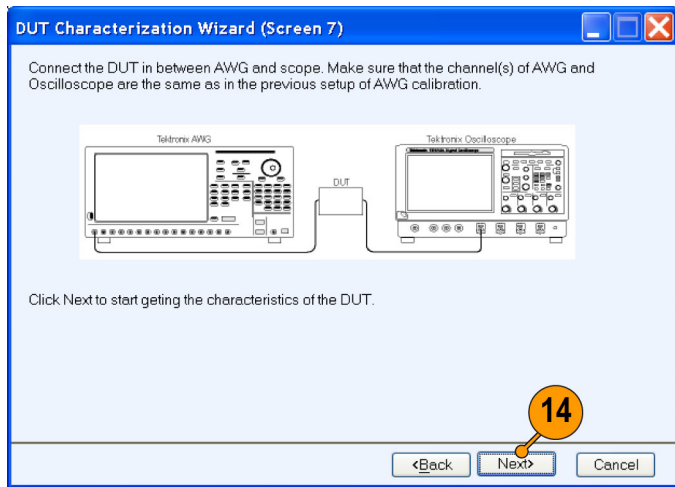
13. Specify the output file name. Click **Next**.

**NOTE.** Characterizing the DUT may take up to 10-15 minutes.



0159-261

14. Click **Next**.



0159-265



**15. Click Next.**

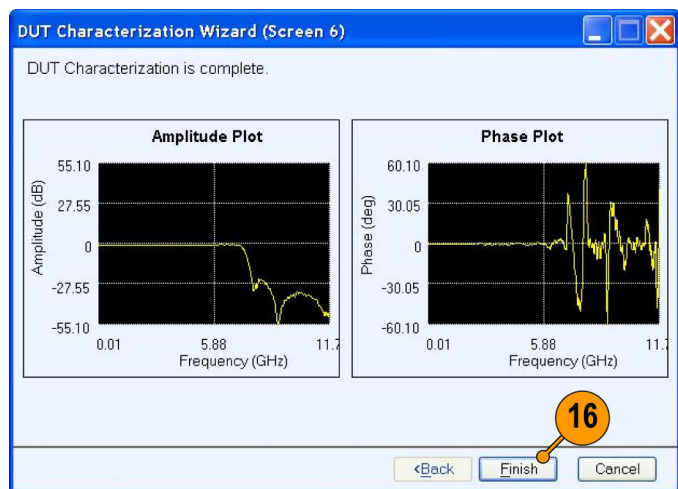
The wizard displays phase and amplitude plots.



0159-292

**16. Click Finish to exit the wizard.**

You can use the file with the DUT characteristics as an input to S-parameter function.

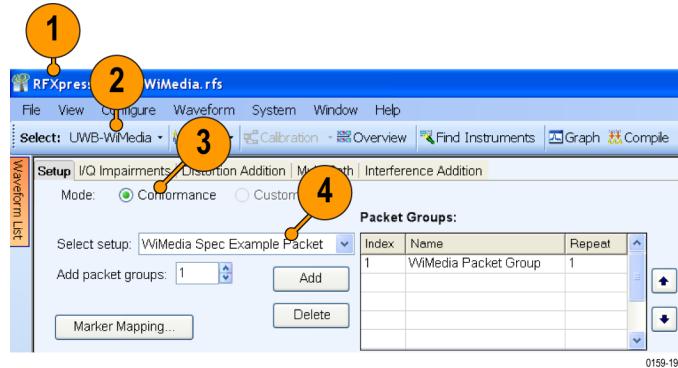


0159-293

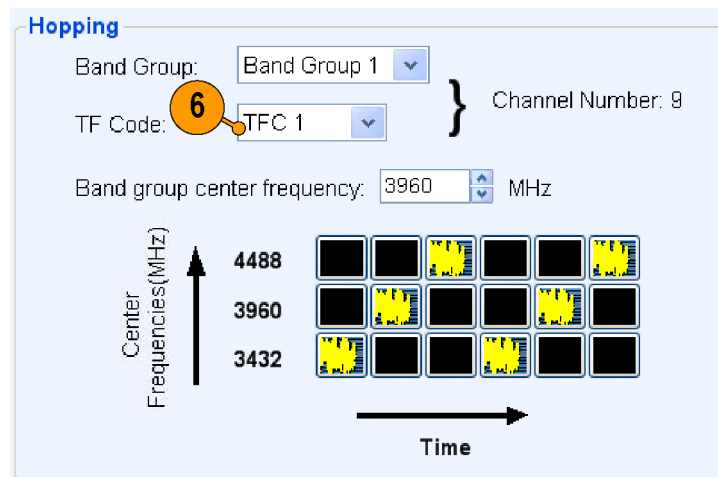
## Creating a UWB Waveform to Test Your Receivers

You can create an ideal waveform and use it to test whether your receivers are operating within the WiMedia specifications.

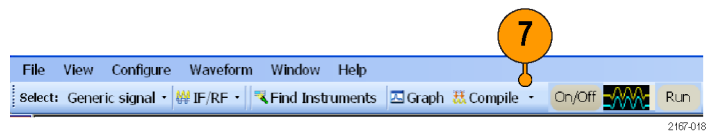
1. Start RFXpress.
2. From the toolbar, click **Select > UWB-WiMedia**.
3. By default, **Conformance** is selected.
4. From the Select Setup, select **WiMedia Spec Example Packet**.



5. The **WiMedia Spec Example Packet** settings (according to Annex A of the WiMedia specification document) are displayed in the fields in each tab.
6. Confirm the **Hopping Pattern** for TF Code 1.



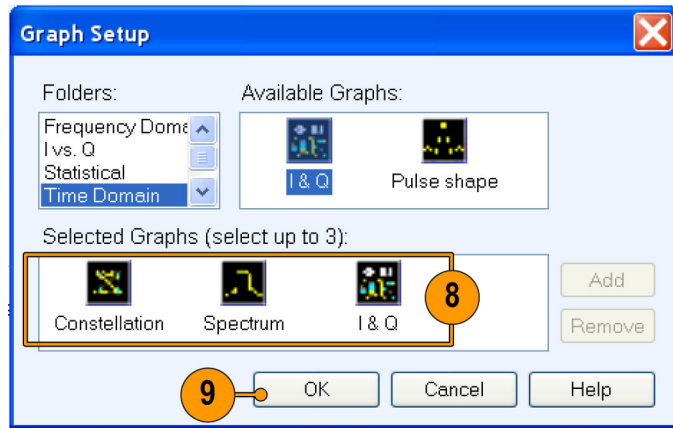
7. Click **Compile**.



8. Add the following graphs in Graph Setup:

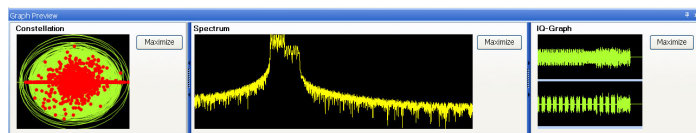
- Frequency Domain: Spectrum.
- I Vs Q: Constellation.
- Time Domain: I & Q.

9. Click **OK**.



0159-196

10. The graphs are as shown.



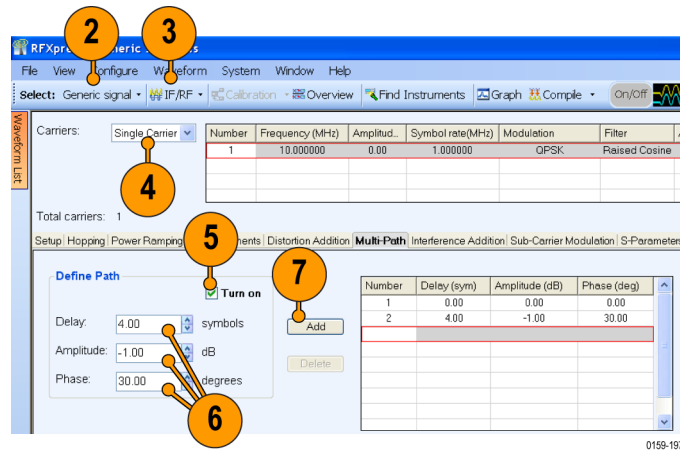


# Application Examples: Generic Signal

## Simulating a MultiPath Environment for a Generic Signal

You can simulate multipath to test your receiver's response to multipaths.

1. Start RFXpress.
2. From the toolbar, ensure that **Select > Generic signal** is selected.
3. Ensure that the signal type is set to **IF/RF**.
4. Ensure that **Single Carrier** is selected. Leave the default values for the carrier.
5. Click **Multi-Path** and select **Turn on**.

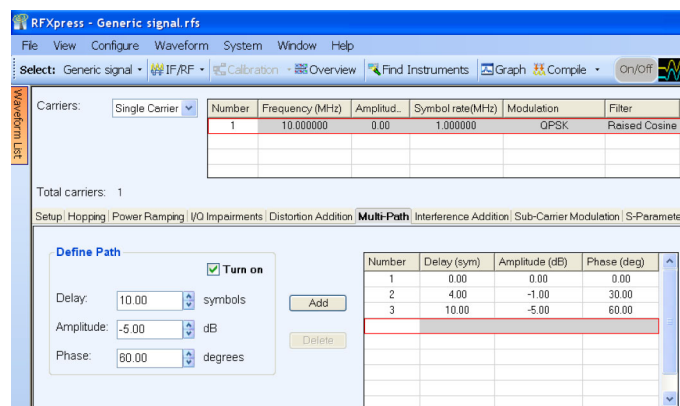


0159-197

6. Set the following parameters:
  - **Delay** to 4 symbols.
  - **Amplitude** to -1 dB.
  - **Phase** to 30 degrees.

7. Click **Add**.

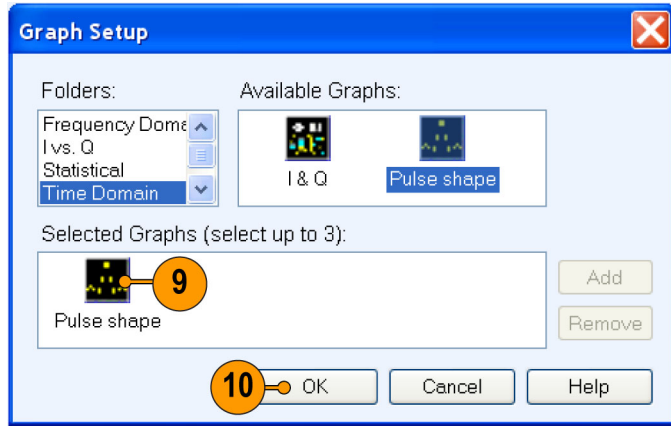
8. Repeat steps 6 and 7, setting the following parameters:
  - **Delay** to 10 symbols.
  - **Amplitude** to -5 dB.
  - **Phase** to 60 degrees.



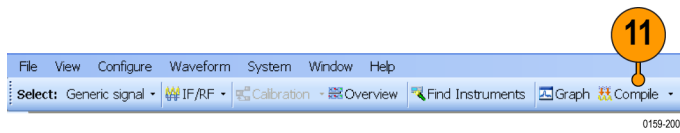
0159-198

9. In Graph Setup, add the following graph:  
Time Domain: Pulse shape.

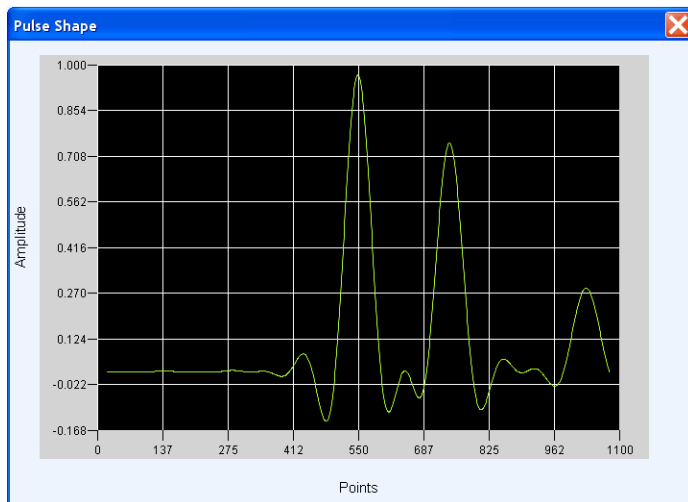
10. Click **OK**.



11. From the toolbar, click **Compile**.



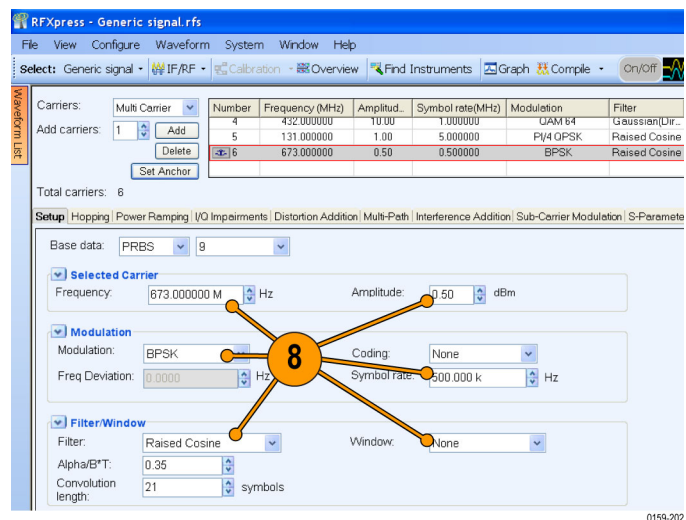
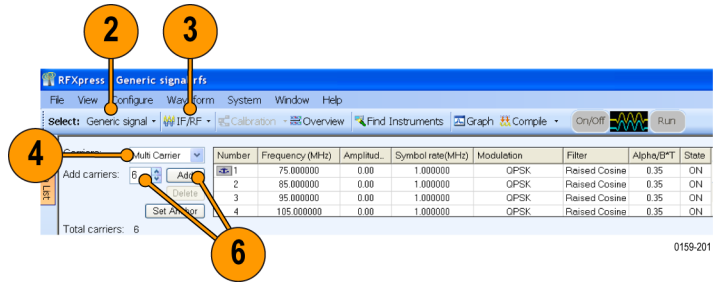
12. The pulse shape is as shown.



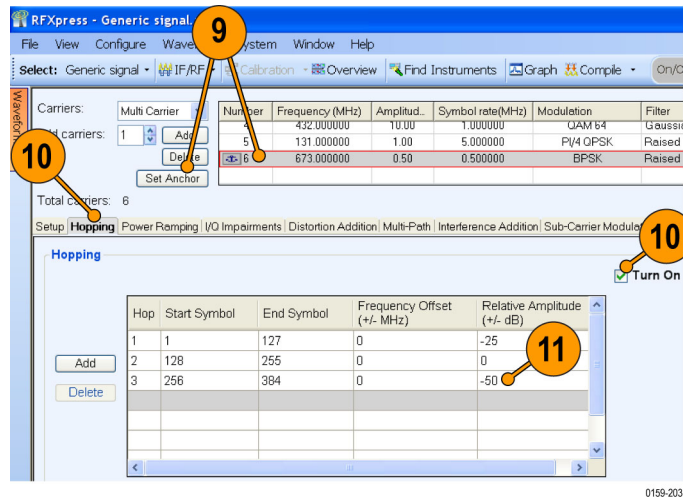
## Creating a Hopping Waveform to Test SIGINT Receivers

A SIGINT (Signal Intelligence) receiver assigned to COMINT duty should gather information about all transmissions in the radio band. The specific tasks of a receiver include the ability to detect and analyze the received transmission, estimate frequency and modulation type, extract intelligence (information) and locate the source. This example addresses the challenges in generating a wide range of real-world signals and hopping signals required to test an effective SIGINT receiver.

1. Start RFXpress.
2. From the toolbar, click **Select > Generic signal**.
3. Ensure that the signal type is set to **IF/RF**.
4. Select **Carrier** to Multi-Carrier.
5. Select the carrier in the table and click **Delete**.
6. In **Add carriers**, enter 6 and click **Add**.
7. Select the carriers one after another, starting with the first carrier.
8. Enter the values for each carrier as in Table 1. (See page 37.)



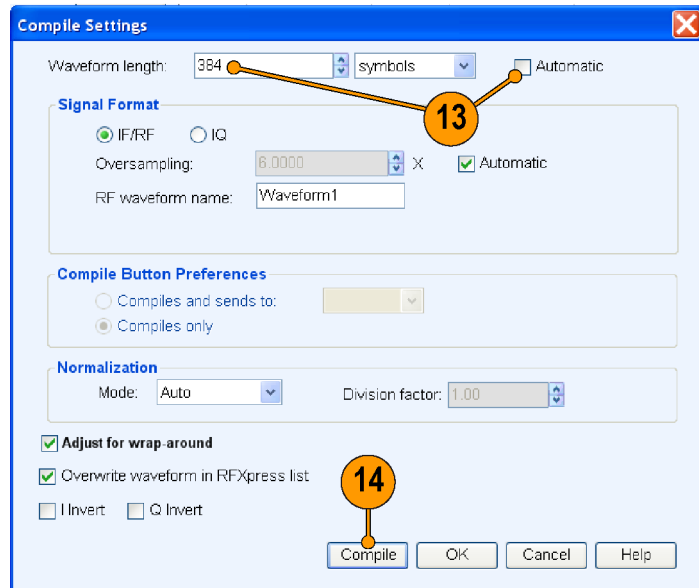
9. Select the sixth carrier and click **Set Anchor**.
10. Click the **Hopping** tab and select **Turn on**.
11. Update the values as shown in Table 2 for each carrier: (See page 38.)



12. From the toolbar, click **Compile > Compile Settings**.

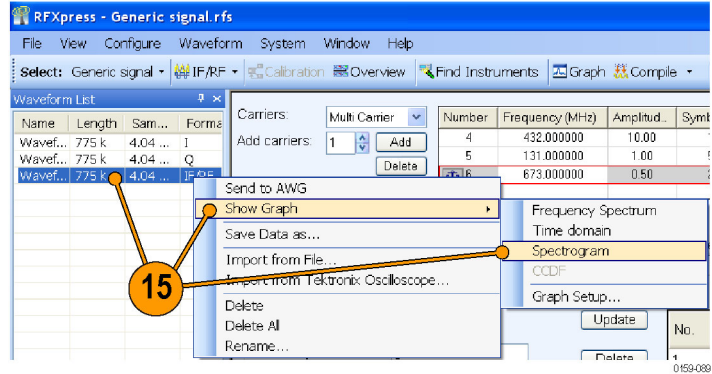


13. Disable **Automatic** and set **Waveform length** to 384 symbols.
14. Click **Compile**.





15. From the waveform list, select an IF/RF waveform. Right-click and select **Show Graph > Spectrogram**.



16. The spectrogram is as shown.

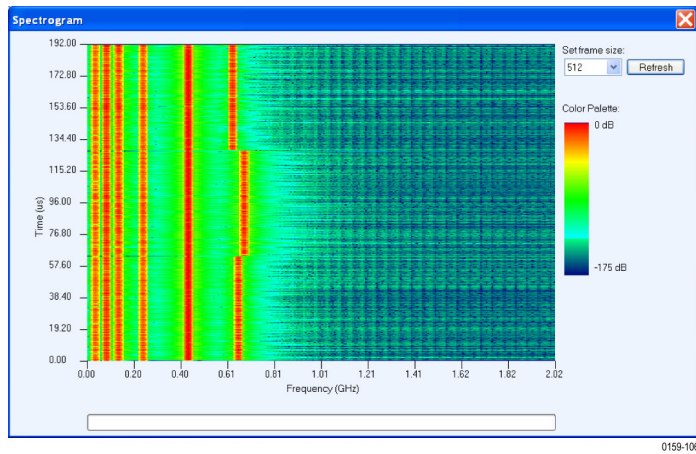


Table 1: Carrier parameters

Signal number	Carrier frequency (MHz)	Amplitude (dBm)	Modulation	Symbol rate (MHz)	Filter	Window
1	31	-6	QPSK	0.5	RC	Blackman
2	79	0	8-PSK	2	Root Raised Cosine	Hamming
3	237	4	FM	30 KHz	-	None
4	432	10	64-QAM	1	Gaussian (Dirac Delta)	Hamming
5	131	1	Pi 1/4 QPSK	5	RC	Blackman
6	673	0.5	BPSK	2	RC	None

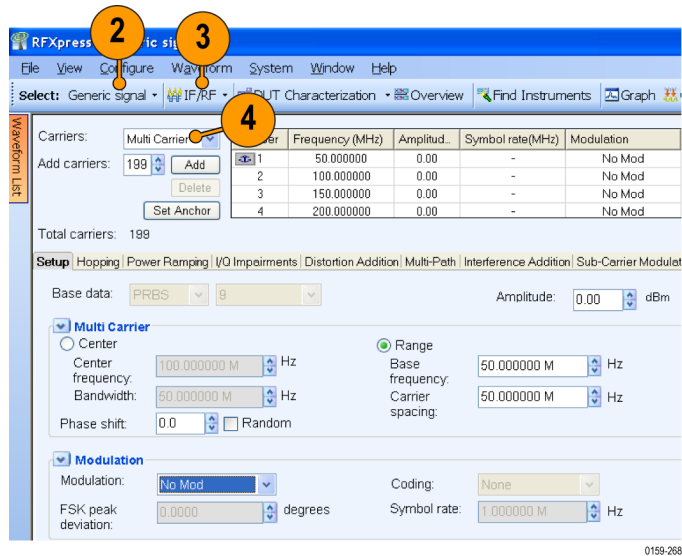
Table 2: Hopping parameters

Signal number	Start symbol	End symbol	Relative amplitude (dB)	Frequency offset (MHz)
1	1	127	0	-25
2	128	255	0	0
3	256	384	0	-50

## S-Parameter Emulation of a High Pass Filter

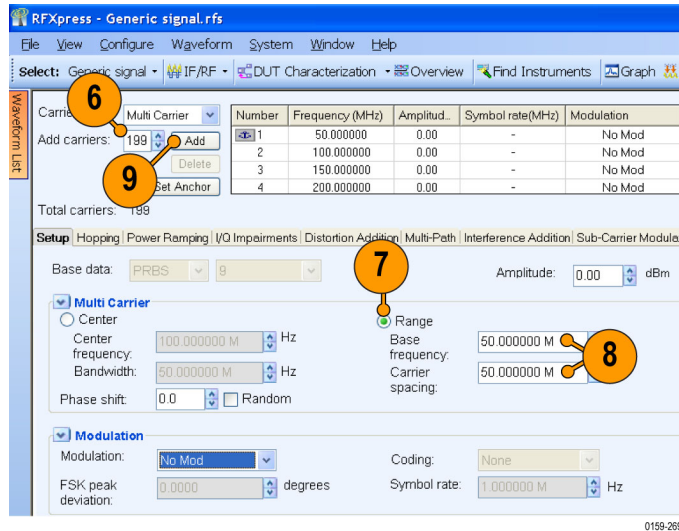
This example will emulate the high pass filter on multitone signals from 50 MHz to 9.95 GHz and apply the high-pass filter S-parameter characteristics on a calibrated multitone signal. To calibrate a signal, see the calibration procedure. (See page 14, *Calibrating a Generic Signal*.)

1. Start RFXpress.
2. From the toolbar, click **Select > Generic signal**.
3. Ensure that the signal type is set to **IF/RF**.
4. Set **Carriers** to Multi Carrier.



5. Select the carrier and click **Delete**.

6. In **Add carriers**, type 199 and press Enter.
7. Click **Range**.

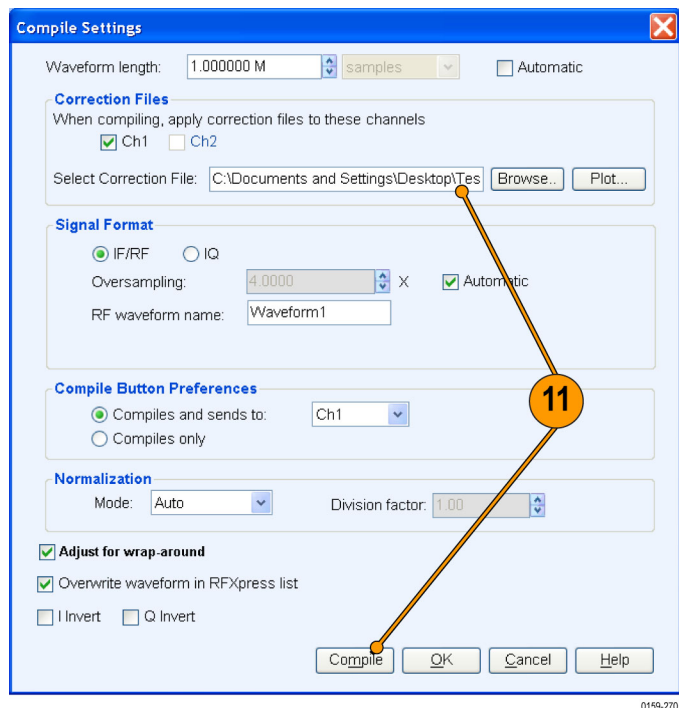


8. Set the following:
  - **Base frequency** to 50 M.
  - **Carrier spacing** to 50 M.

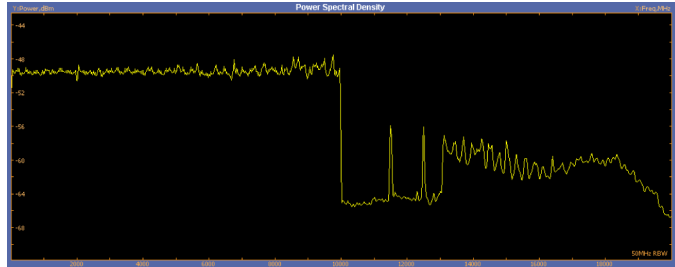
9. Click **Add**.

10. From the toolbar, click **Compile Settings**.

11. Select the correction file (created during calibration), and click **Compile**.  
 To create the correction file, refer to the calibration procedure. (See page 14, *Calibrating a Generic Signal*.)



- Capture the waveform in the oscilloscope. The signal spectrum is observed using Tektronix Ultra Wideband Spectral Analysis software.



0159-271

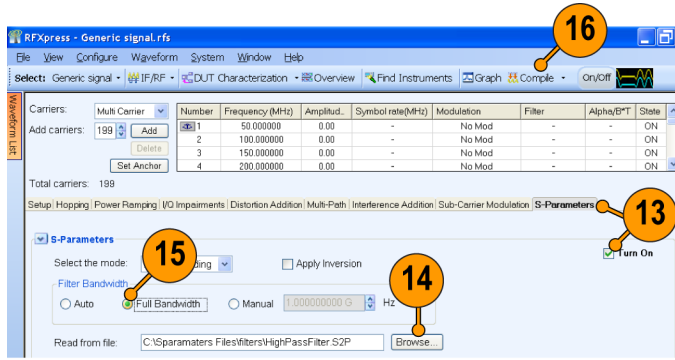
- Click the **S-Parameters** tab and select Turn On.

- Browse the Touchstone file to emulate. This example uses a .s2p file for a high-pass filter with a cut-off of 5.5 GHz.

- Select **Full Bandwidth**.

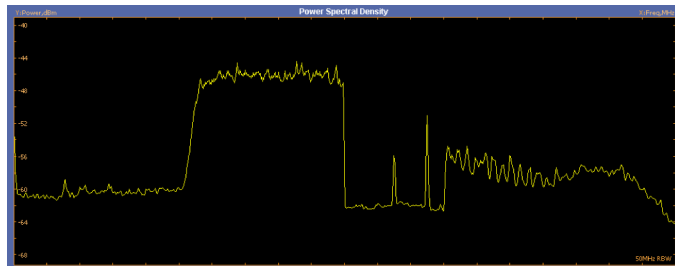
- From the toolbar, click **Compile**.

**NOTE.** In the message box, click **Continue** to proceed.



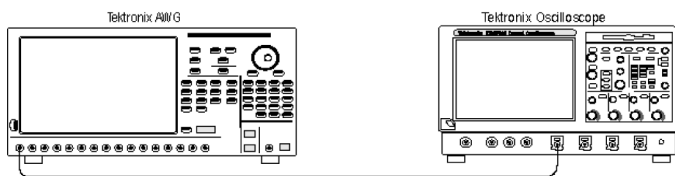
0159-272

- Observe the signal spectrum using Tektronix Ultra Wideband Spectral Analysis software.



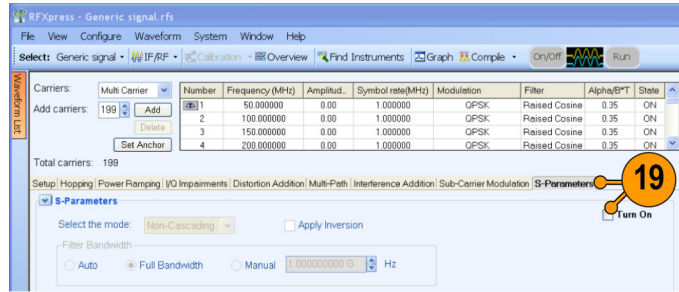
0159-273

- To verify the spectrum and the S-parameter, connect a high-pass filter (DUT) as shown.



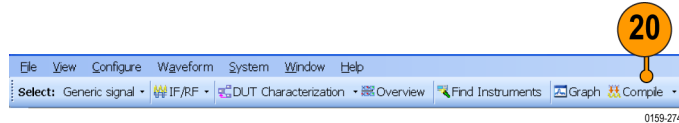
0159-297

- Click the **S-Parameters** tab and select **Turn On** (to turn it off).



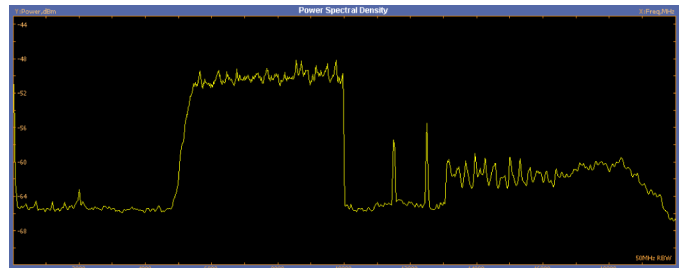
0159-296

- From the toolbar, click **Compile**.



0159-274

- Observe the signal spectrum using Tektronix Ultra Wideband Spectral Analysis software.



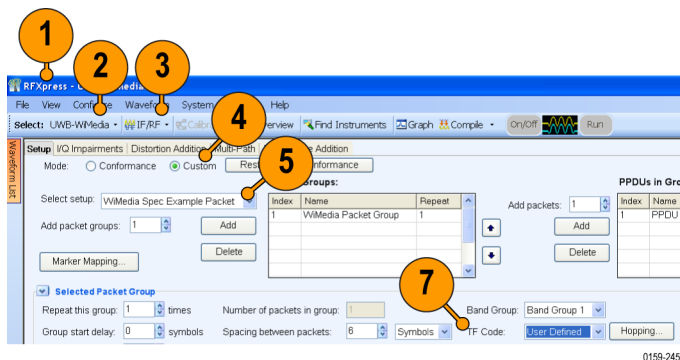
0159-275

# Application Examples: UWB-WiMedia

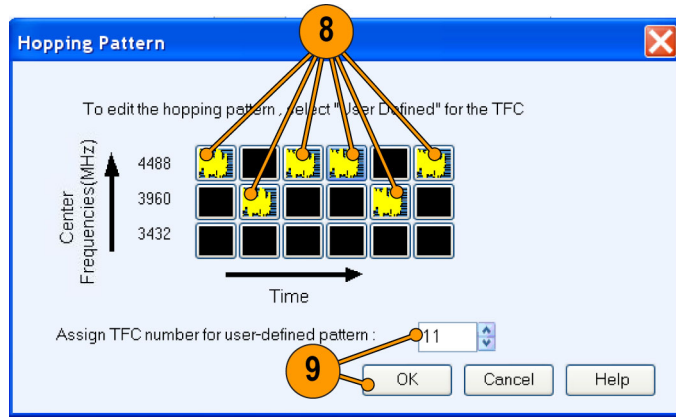
## Characterize Receiver Design for Receiver Verification and Stress Test

You can generate a signal and use it to test your receiver at conditions just outside the boundary values specified by the WiMedia standard.

1. Start RFXpress.
2. From the toolbar, click **Select > UWB-WiMedia**.
3. Set the signal type to **IF/RF**.
4. Select **Custom**.
5. From the Select Setup, select **WiMedia Spec Example Packet**.
6. The default values for the selected setup and packet are shown graphically.
7. For the selected packet group, set **TF Code** to User Defined.



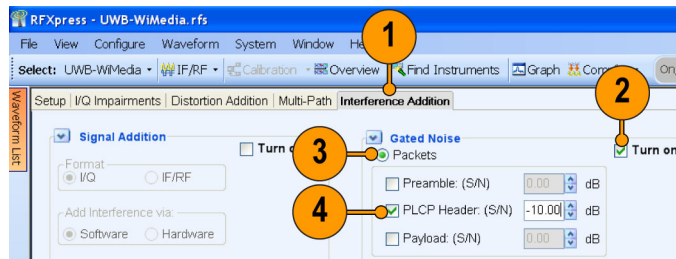
8. To define a hopping pattern: In each column, click the frequency that you want to use. Set the hopping pattern to: 323323.
9. Assign a TFC number for the pattern that you defined and click **OK**.



0159-205

### Adding Interference

1. Click **Interference Addition**.
2. In the Gated Noise group, select **Turn on**.
3. Click **Packets**.
4. Click **PLCP Header** and set it to  $-10.0$ .



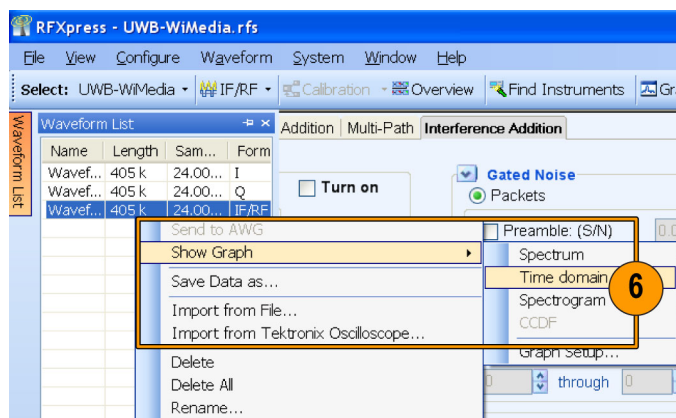
0159-205

5. From the toolbar, click **Compile**.



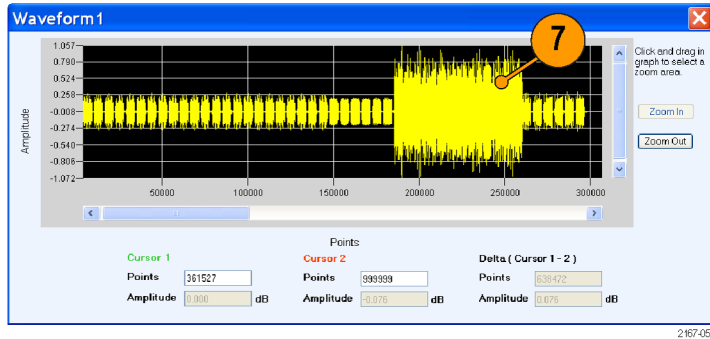
0159-207

6. In the Waveform List, select the IF/RF waveform and right-click. Select **Show Graph > Time domain**.



0159-208

- Observe the noise in the header. The noise of 10 dB is greater than the signal.



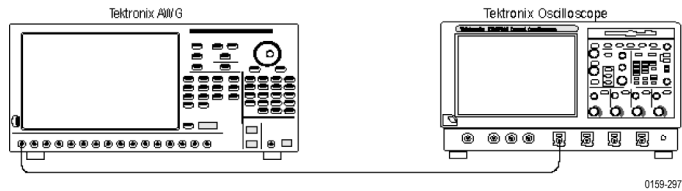
## Using Calibration to Increase the Flatness of a UWB Signal Path to the DUT

The calibration feature allows you to generate correction files that you can use during compilation to predistort the signal, thereby increasing the flatness of the signal.

- Set up the instruments as shown. The instruments must be connected over a LAN.

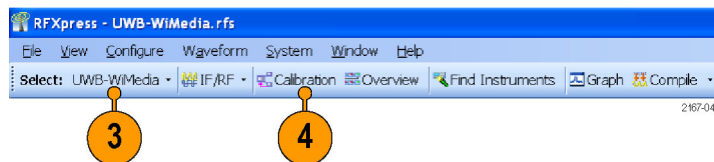
You will need:

- A Tektronix AWG7122B with Option 06, running RFXpress software.
- A Tektronix DPO70804 oscilloscope to capture the signal. Ensure that the oscilloscope is calibrated.
- Connecting cable.



**NOTE.** Ensure that the output of the AWG Interleave channel is connected to Channel 1 of the oscilloscope.

- Start RFXpress.
- From the toolbar, click **Select > UWB-WiMedia**.
- From the toolbar, click **Calibration**.

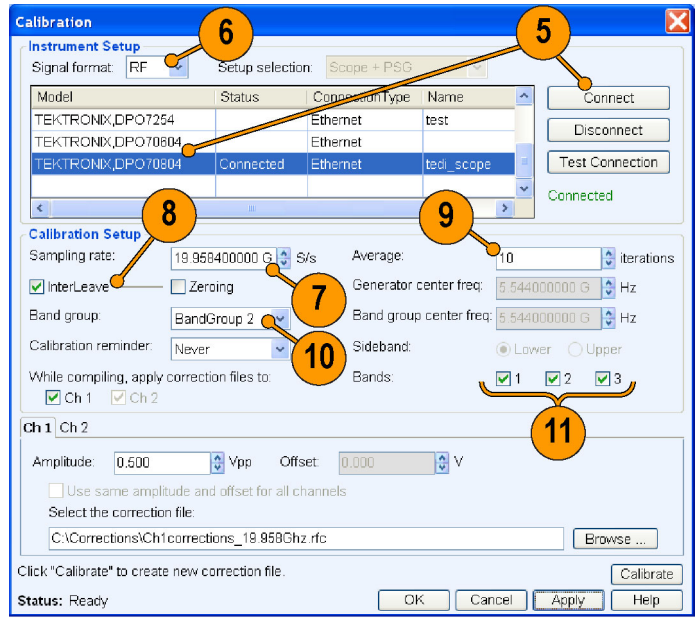




- The Calibration window displays a table of instruments connected on the network. Select the DPO70804 oscilloscope and click **Connect**. Note that the status changes to Connected.

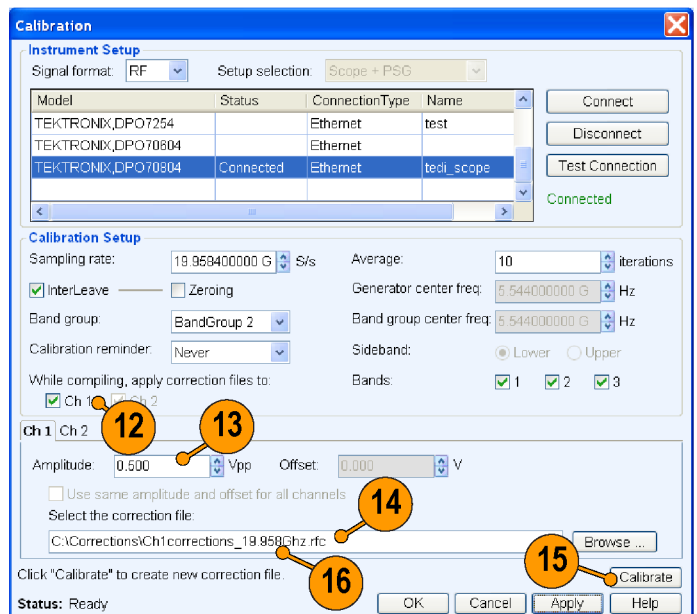
**NOTE.** You can click *Test Connection* to test the status of the instrument.

- Set the signal type to RF.
- Set the **Sampling Rate** to 19.996576 GS/s.
- Select **InterLeave**.
- Set the **Average** to 10.
- Set the **Band group** to 2.
- Select **Bands**: 1, 2, and 3.



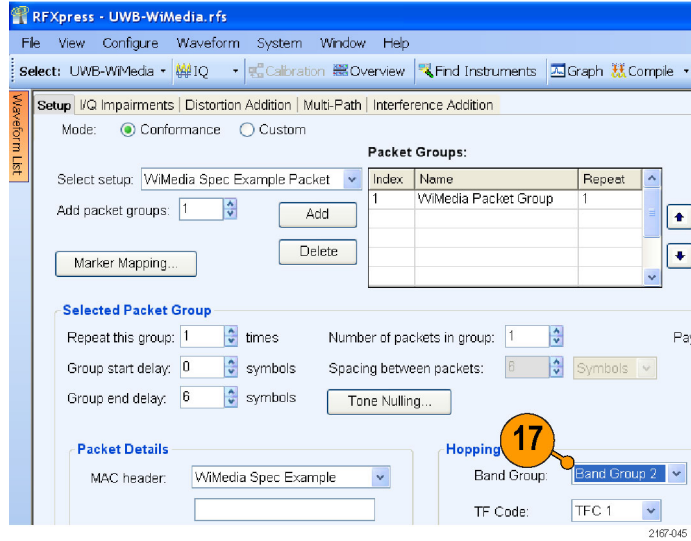
2167-043

- Set **While compiling, apply correction files to** to Ch1.
- Set the **Amplitude** for Ch 1 to 0.5 Vpp.
- Set the path for **Select the correction file**.
- Click **Calibrate** to create the correction file (.rfc). The calibration status is continually updated.
- Confirm that the correction file that was just generated is selected.

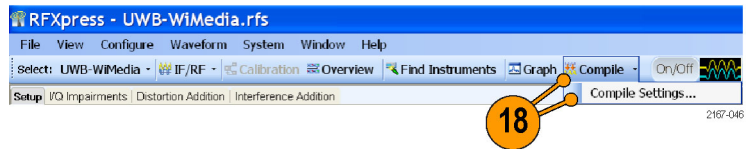


2167-044

17. Set **Band Group** to Band Group 2.



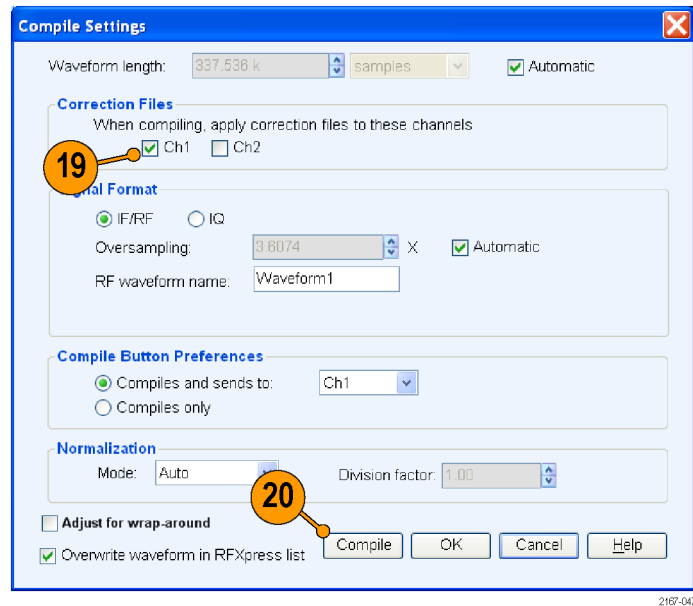
18. From the toolbar, click **Compile > Compile Settings**.



19. Ensure that the correction file created during calibration is applied to Ch1.

**NOTE.** *Oversampling is calculated automatically to achieve a sampling rate of 19.996576 GS/s.*

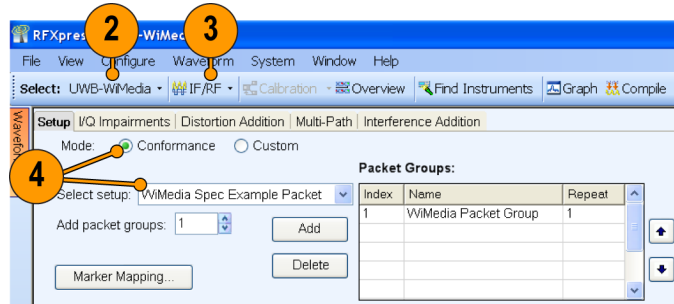
20. Click **Compile**.



## Introducing Real-World Impairments in a UWB Signal

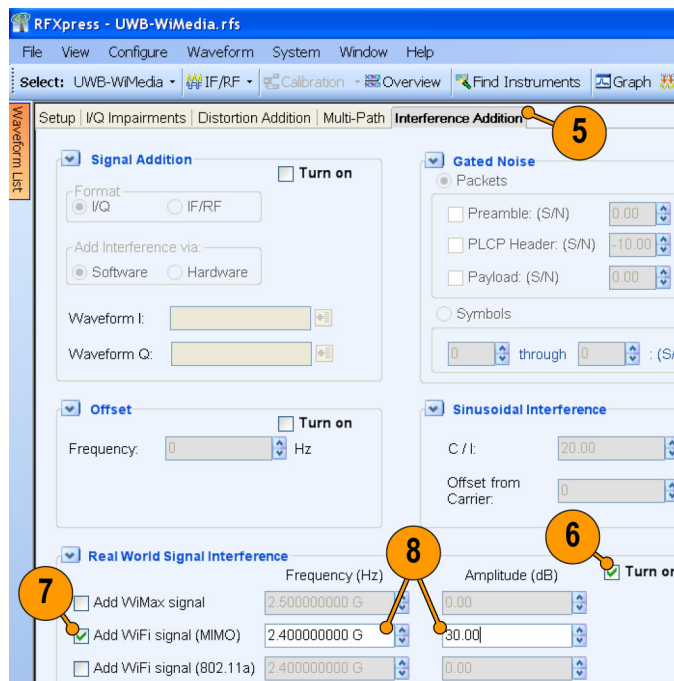
You can introduce real-world impairments in a UWB signal to test your receiver in a simulated real-world environment.

1. Start RFXpress.
2. From the toolbar, click **Select > UWB-WiMedia**.
3. Ensure that the signal type is set to **IF/RF**.
4. Ensure that the **Mode** is Conformance and the **Selected setup** is WiMedia Spec Example Packet. Leave the default values for the selected setup.



0159-209

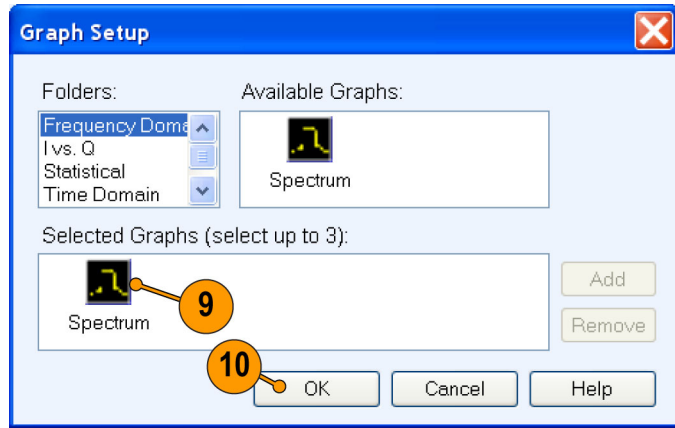
5. Click **Interference Addition**.
6. In the Real World Signal Interference group box, click **Turn on**.
7. Click **Add WiFi signal (MIMO)**.
8. Set the following parameters:
  - **Frequency** to 2.4 G Hz (default).
  - **Amplitude** to 30 dB.



0159-210

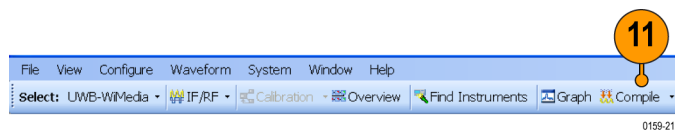
9. In Graph Setup, add the following graph:  
Frequency Domain: Spectrum

10. Click **OK**.



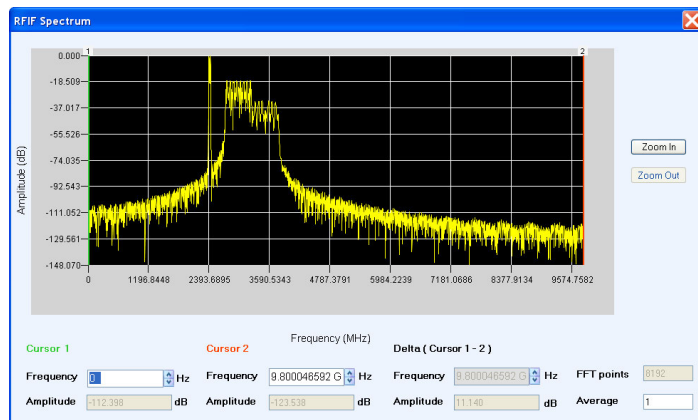
0159-211

11. From the toolbar, click **Compile**.



0159-212

12. The spectrum is as shown.

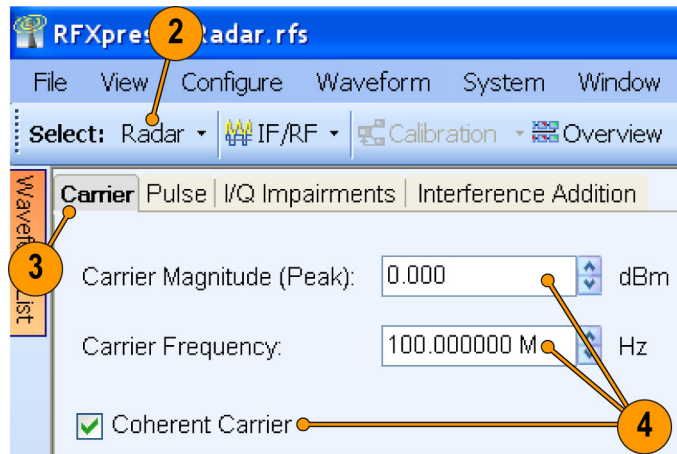


## Application Examples: Radar

### Generating an LFM Waveform with Coherent Carrier for Pulse Compression Radar

You can use the Radar plug-in to generate an LFM waveform with coherent carrier for pulse compression radar.

1. Start RFXpress.
2. From the toolbar, click **Select > Radar**.
3. Click the **Carrier** tab.
4. Keep the following defaults:
  - **Carrier Magnitude (Peak)** to 0 dBm.
  - **Carrier Frequency** to 100 MHz.
  - **Coherent Carrier** is selected.



0159-213

5. Select the **Pulse** tab and select the **Pulse Envelope** tab.

6. Set the following:

- **Pulse Shape** to Rectangular (default).
- **Start Time** to 0 ps (default).
- **Pulse Width** to 10  $\mu$ s at 100%.
- **Off Time** to 198  $\mu$ s.

**NOTE.** The PRF and PRI values are calculated and automatically updated based on the parameters that you just set. In this case, the PRF is 4.807 KHz and the PRI (in the table) is 0.2080 ms.

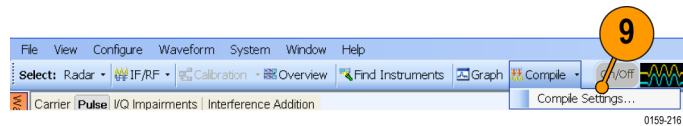
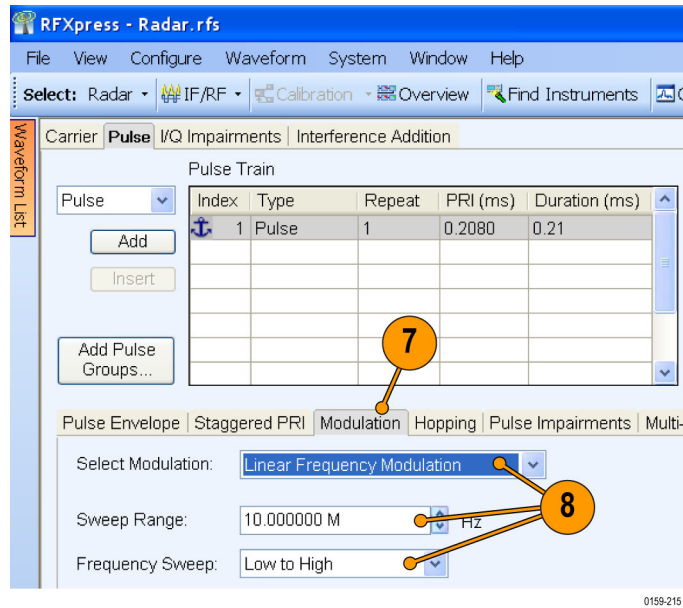
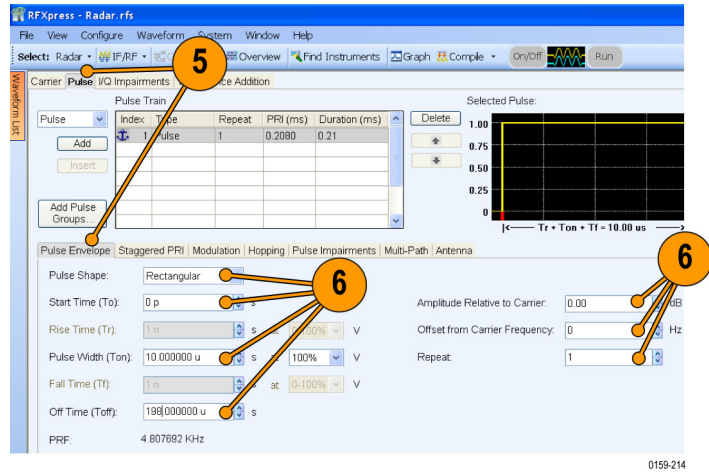
- **Amplitude Relative to Carrier** to 0 dB (default).
- **Offset from Carrier Frequency** to 0 Hz (default).
- **Repeat** to 1 (default).

7. Click the **Modulation** tab.

8. Set the following:

- **Select Modulation** to Linear Frequency Modulation.
- **Sweep Range** to 10 MHz.
- **Frequency Sweep** to Low to High.

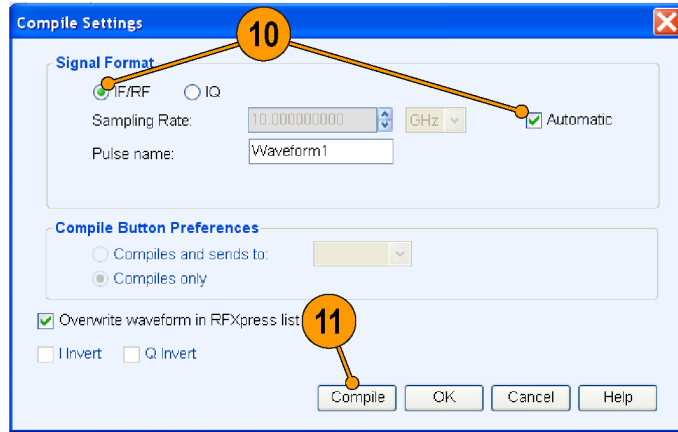
9. From the toolbar, click **Compile Settings**.



10. Ensure the following:

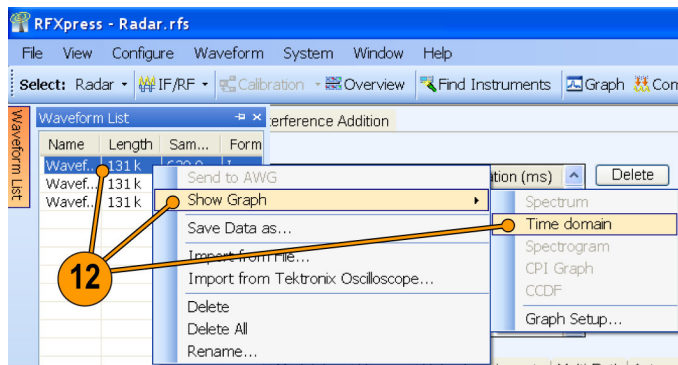
- **Signal Format** is IF/RF.
- **Automatic** is selected.

11. Click **Compile**.



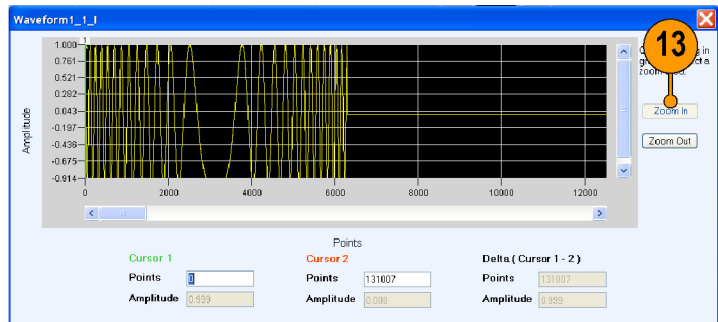
0159-107

12. The compiled pulse is displayed in the Waveform List. In the Waveform List, select the I signal and right-click. Select **Show Graph > Time domain** to display the graph of the pulse.



0159-217

13. Click **Zoom In** and select an area to zoom.

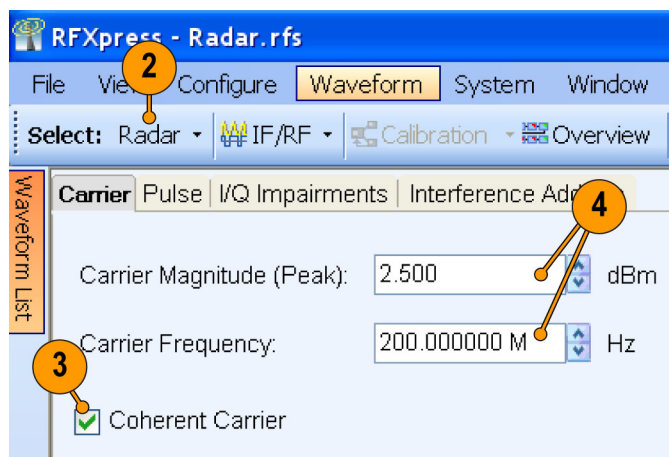


0159-036

## Generating a Hopping Radar Waveform: Creating a Pulse-to-Pulse Frequency Hopping Signal

A pulse-to-pulse hopping radar signals are also known as frequency agile waveforms. Pulse-to-pulse hopping is used in electronic counter measures by rapidly switching the frequency of the transmitted energy and receiving only that frequency during the receiving time window.

1. Start RFXpress.
2. From the toolbar, click **Select > Radar**.
3. In the **Carrier** tab, ensure that **Coherent Carrier** is selected (default).
4. Set the following:
  - **Carrier Magnitude (Peak)** to 2.5 dBm.
  - **Carrier Frequency** to 200 MHz.





5. Select the **Pulse** tab and select the **Pulse Envelope** tab.

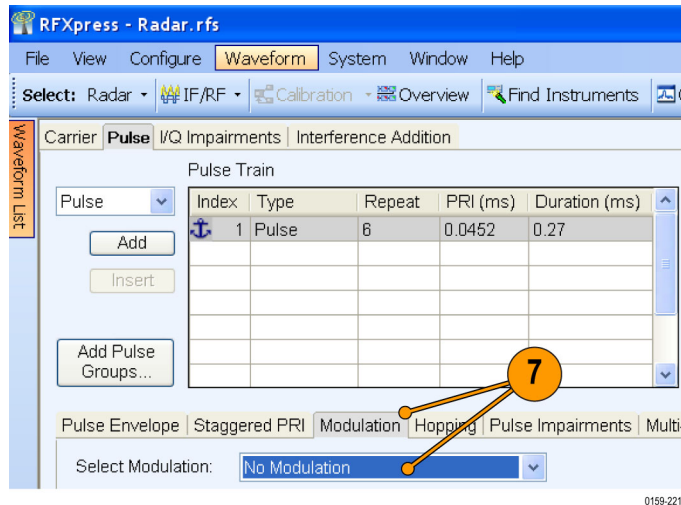
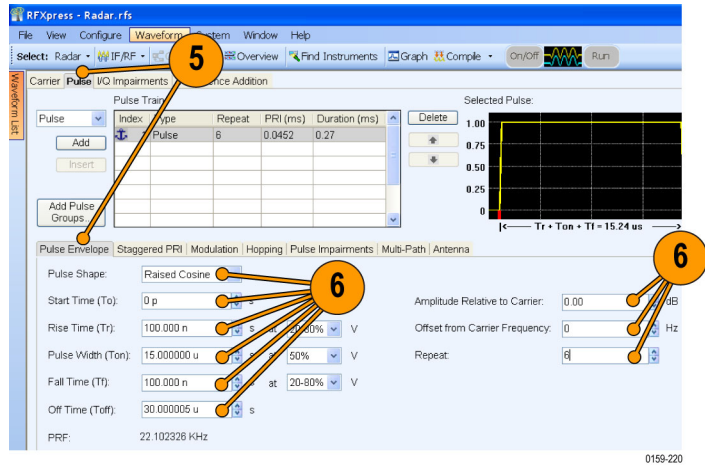
6. Set the following:

- **Pulse Shape** to Raised Cosine.
- **Start Time** to 0 ps (default).
- **Rise Time** to 0.1  $\mu$ s at 20–80%.
- **Pulse Width** to 15  $\mu$ s at 50%.
- **Fall Time** to 0.1  $\mu$ s at 20–80%.
- **Off Time** to 30  $\mu$ s.

**NOTE.** The PRF and PRI values are calculated and automatically updated based on the parameters that you just set. In this case, the PRF is 22.102 KHz and the PRI (in the table) is 0.0452 ms.

- **Amplitude Relative to Carrier** to 0 dB (default).
- **Offset from Carrier Frequency** to 0 Hz (default).
- **Repeat** to 6.

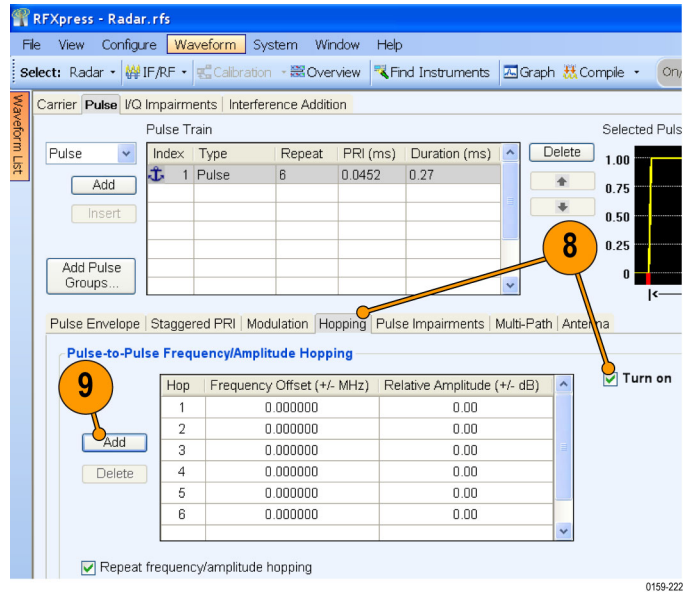
7. Click the **Modulation** tab and set **Select Modulation** to No Modulation.



8. Click the **Hopping** tab and select Turn on.

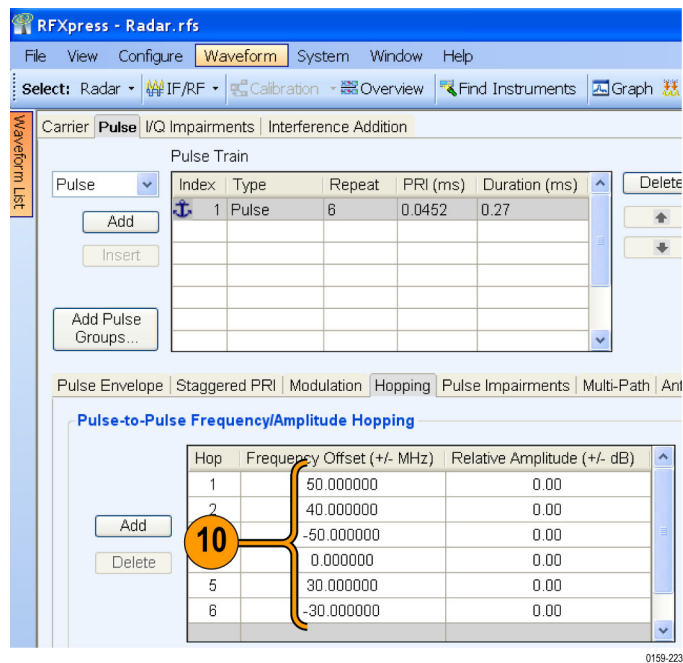
9. In the table, click **Add** to add rows.

**NOTE.** You cannot add more rows than the repeat value (6 in this case).

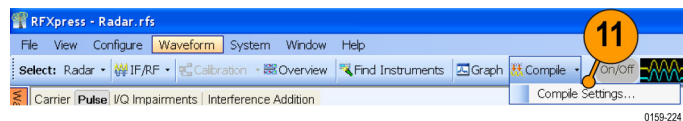


10. Set the following:

- Frequency Offset for the first hop to 50 MHz.
- Frequency Offset for the second hop to 40 MHz.
- Frequency Offset for the third hop to -50 MHz.
- Frequency Offset for the fourth hop to 0 MHz.
- Frequency Offset for the fifth hop to 30 MHz.
- Frequency Offset for the sixth hop to -30 MHz.



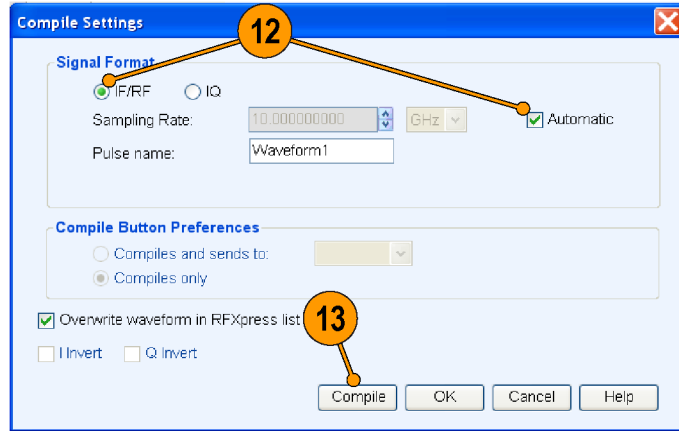
11. From the toolbar, click **Compile Settings**.



12. Ensure the following:

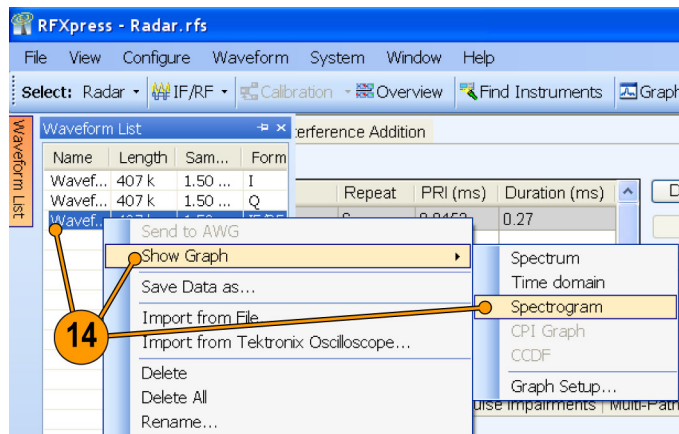
- **Signal Format** is IF/RF.
- **Automatic** is selected.

13. Click **Compile**.



0159-139

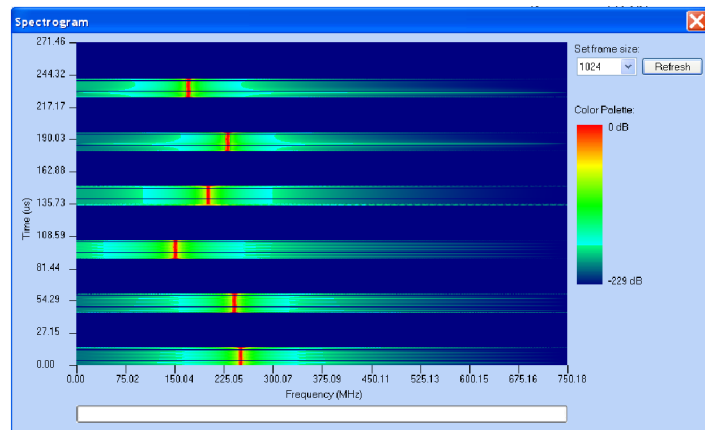
14. The compiled pulse is displayed in the Waveform List. In the Waveform List, select the IF/RF signal and right-click. Select **Show Graph > Spectrogram** to display the graph of the pulse.



0159-225

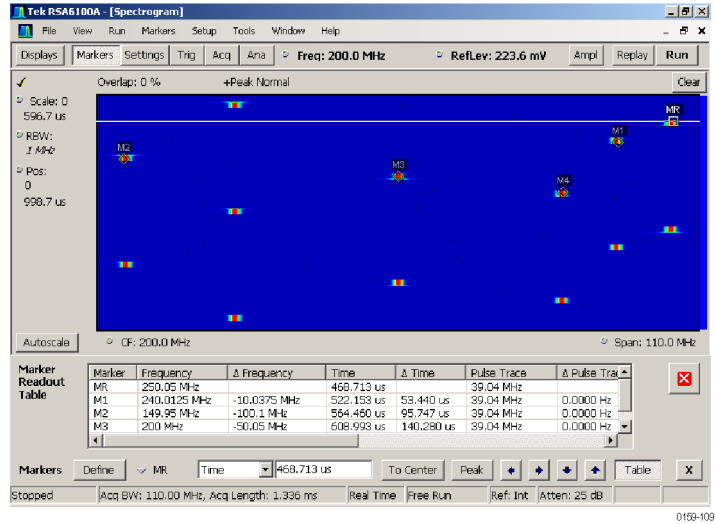
15. The spectrogram is as shown.

**NOTE.** For better resolution, increase the frame size and click Refresh.



0159-106

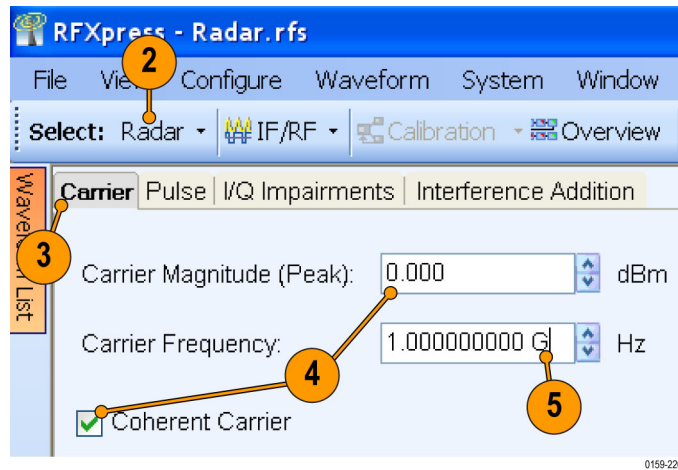
- The spectrogram as seen in a Tektronix RSA6100A is as shown.



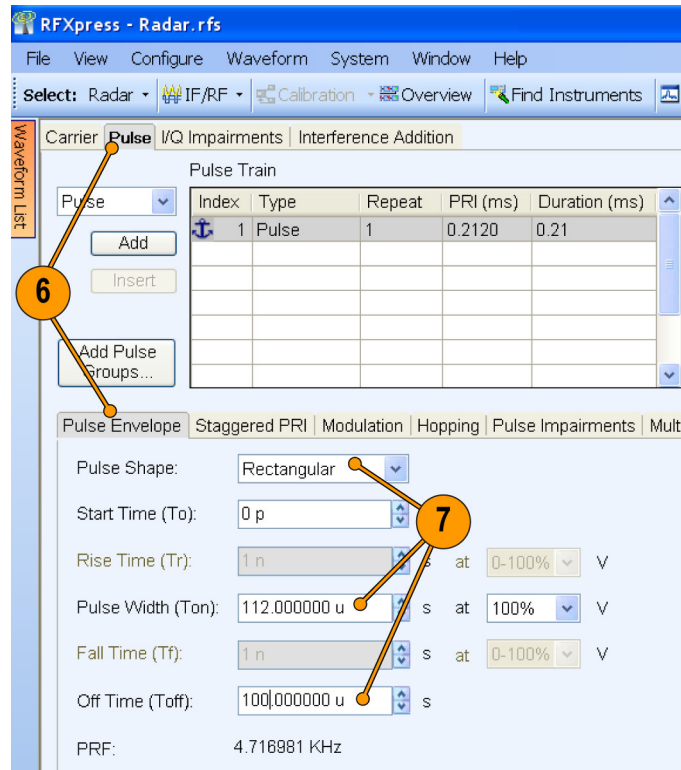
## Creating Costa's Modulation

You can use RFXpress to test receivers with Costa's modulation, which are used for better range and Doppler resolution.

- Start RFXpress.
- From the toolbar, click **Select > Radar**.
- Click the **Carrier** tab.
- Leave the defaults for **Coherent Carrier** (enabled) and **Carrier Magnitude (Peak)**.
- Set the desired **Carrier Frequency**, for example to 1 GHz.



6. Select the **Pulse** tab and select the **Pulse Envelope** tab.
7. Set the following:
  - **Pulse Shape** to Rectangular.
  - **Pulse Width** to 112  $\mu$ s.
  - **Off Time** to 100  $\mu$ s.



8. Click the **Modulation** tab and set **Select Modulation** to User Defined Step FM. You will create a Costa's code of seven steps with  $\Delta f = 42.4$  MHz. The code that will be used is 3605412.

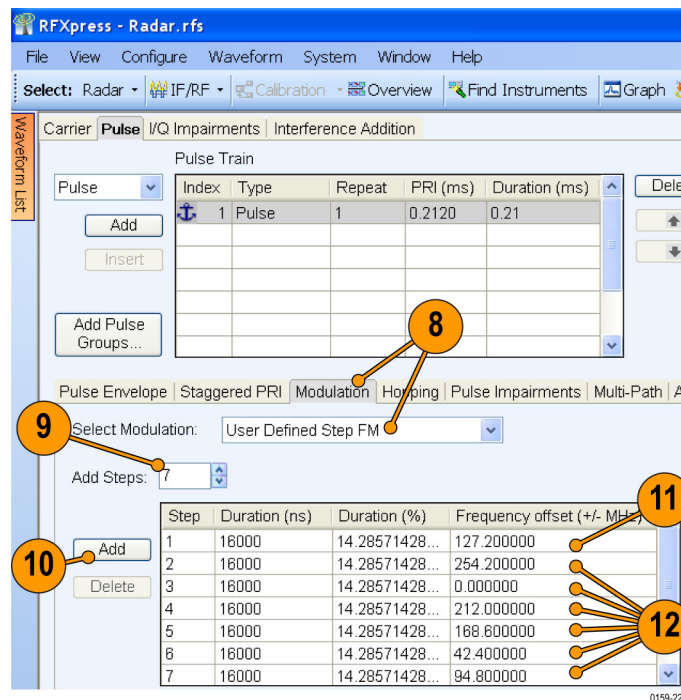
9. In **Add Steps** enter 7.

10. Click **Add**.

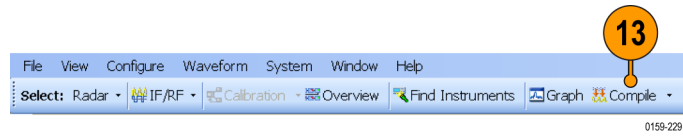
11. In the table, enter the following:

- **Duration** to 16000 ns.
- **Frequency** to 127.2 MHz.

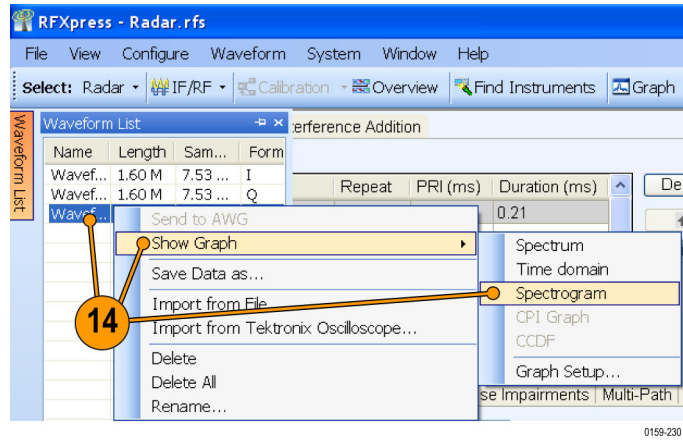
12. Repeat step 11 for all the steps in the code. Keep the duration constant (16000 ns) and calculate the frequency using the formula  $\Delta f * \text{code}$  (for example  $42.5 * 3$ ,  $42.5 * 6$ ,  $42.5 * 0$ , and the rest).



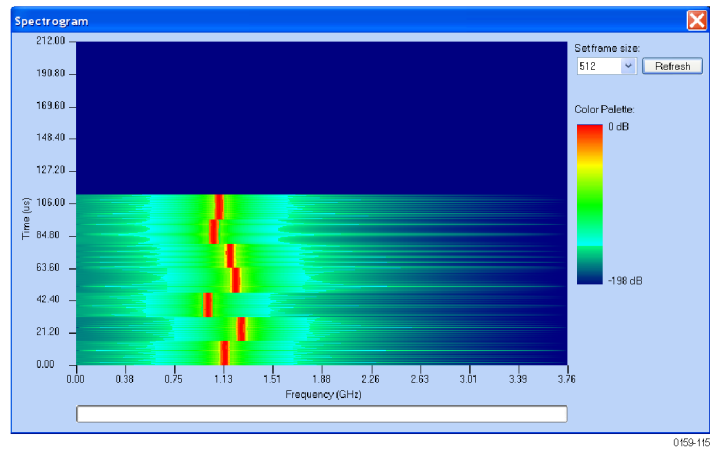
13. From the toolbar, click **Compile**.



14. In the waveform list, select IF/RF. Right-click and select **Show Graph > Spectrogram**.



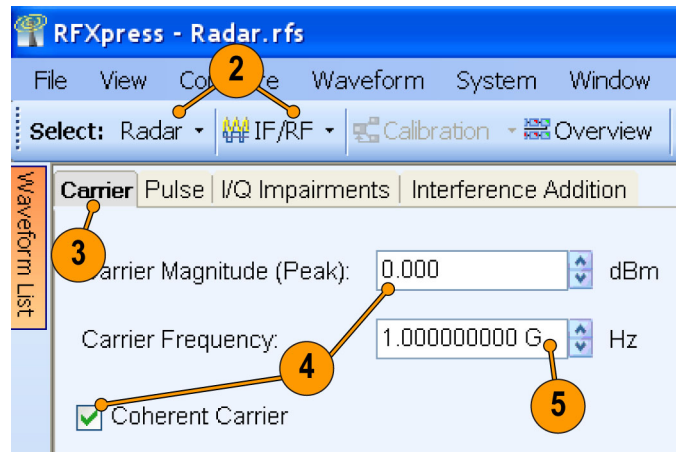
15. The spectrogram is as shown.



## Creating a Radar Waveform using Staggered PRI for Better Range Ambiguity

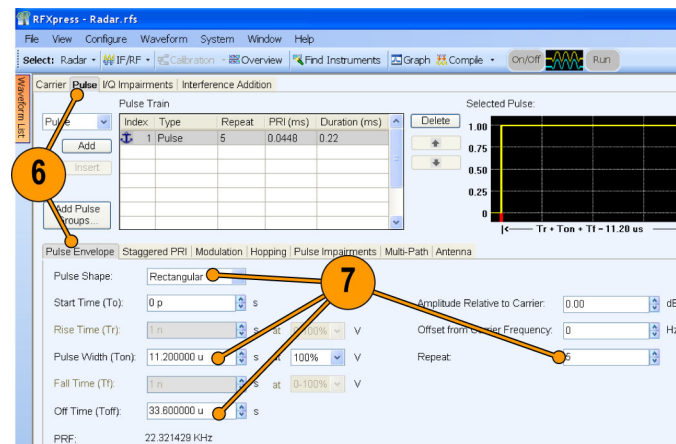
One of the applications of Staggered PRI is in Moving Target Indication (MTI) Radars which have to resolve range and Doppler ambiguities. This example shows how to create pulse-to-pulse staggering.

1. Start RFXpress.
2. From the toolbar, click **Select > Radar**.  
Select the signal type as **IF/RF**.
3. Click the **Carrier** tab.
4. Leave the defaults for **Coherent Carrier** (enabled) and **Carrier Magnitude (Peak)** (**Peak**).
5. Set the **Carrier Frequency** to 1 GHz.



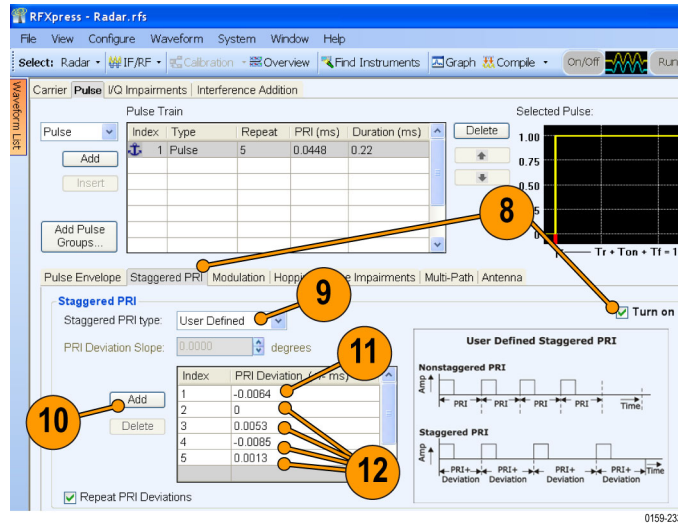
0159-231

6. Select the **Pulse** tab and select the **Pulse Envelope** tab.
7. Set the following:
  - **Pulse Shape** to Rectangular.
  - **Pulse Width** to 11.2  $\mu$ s.
  - **Off Time** to 33.6  $\mu$ s.
  - **Repeat** to 5.

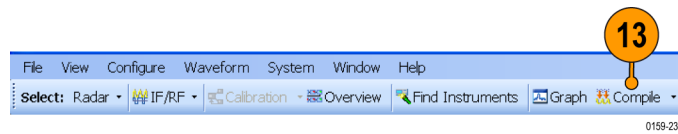


0159-232

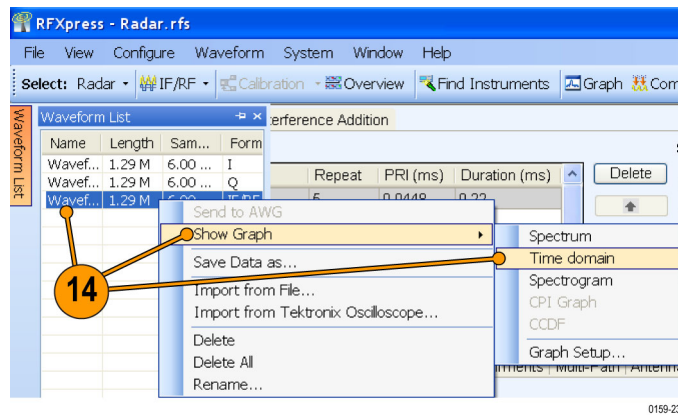
8. Click the **Staggered PRI** tab and select **Turn on**.
9. Set **Staggered PRI type** to User Defined.  
You will change the PRI for each pulse by adding a deviation. The PRI is calculated as follows: Current PRI + deviation. The deviation is specified in the table.
10. Click **Add** to add a row to the table.
11. Enter the deviation  $-0.0064$  (in ms) for the first pulse.
12. Repeat steps 10 and 11 to enter the deviation for the remaining pulses as: 0, 0.0053,  $-0.0085$ , and 0.0013.



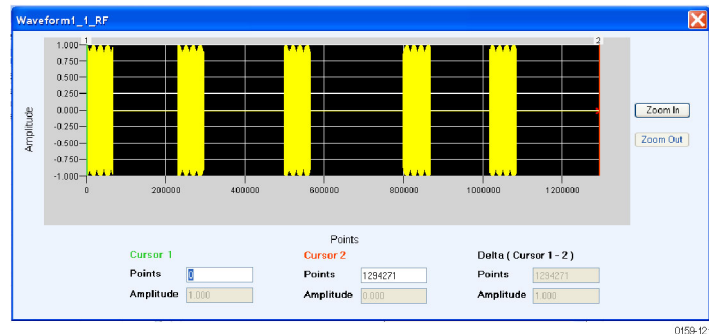
13. From the toolbar, click **Compile**.



14. In the waveform list, select IF/RF. Right-click and select **Show Graph > Time domain**.



15. The time domain graph is as shown.

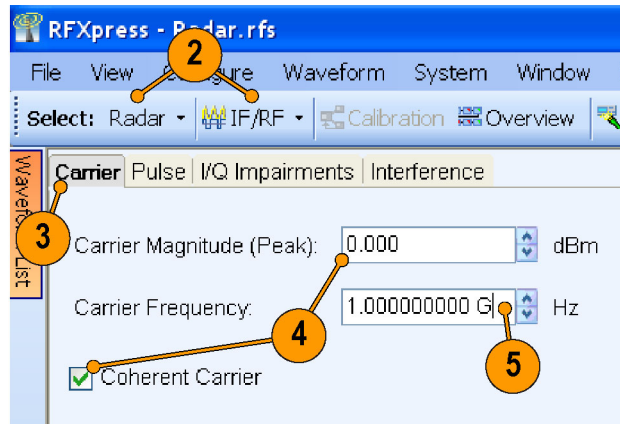




## Simulating Multiple Targets for Radar Receiver Testing (Different Pulse Groups)

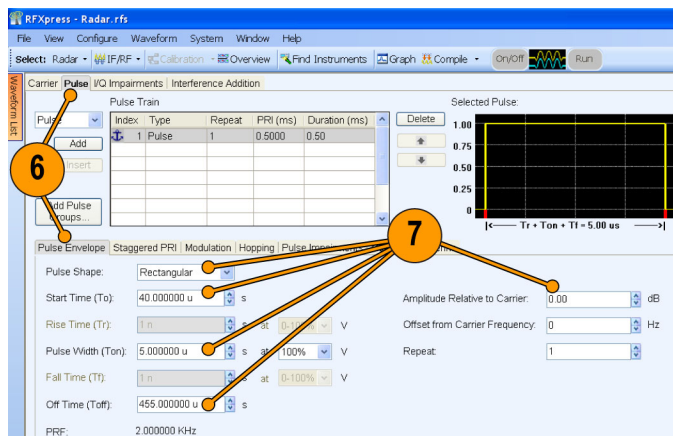
You can use RFXpress to simulate three targets. With the transmitter sending a pulse of duration 5  $\mu$ s with a PRI of 500  $\mu$ s, this example will simulate three targets – the first at 40  $\mu$ s from the reference, the second at 120  $\mu$ s, and the third at 300  $\mu$ s.

1. Start RFXpress.
2. From the toolbar, click **Select > Radar**.  
Set the signal type to **IF/RF**.
3. Click the **Carrier** tab.
4. Leave the defaults for **Coherent Carrier** (enabled) and **Carrier Magnitude (Peak)** (Peak).
5. Set the **Carrier Frequency** to 1 GHz.



0159-122

6. Select the **Pulse** tab and select the **Pulse Envelope** tab.
7. Set the following:
  - **Pulse Shape** to Rectangular.
  - **Start Time** to 40  $\mu$ s.
  - **Pulse Width** to 5  $\mu$ s at 100%.
  - **Off Time** to 455  $\mu$ s.
  - **Amplitude Relative to Carrier** to 0 dB (default).
 Observe that the PRI is 500  $\mu$ s.

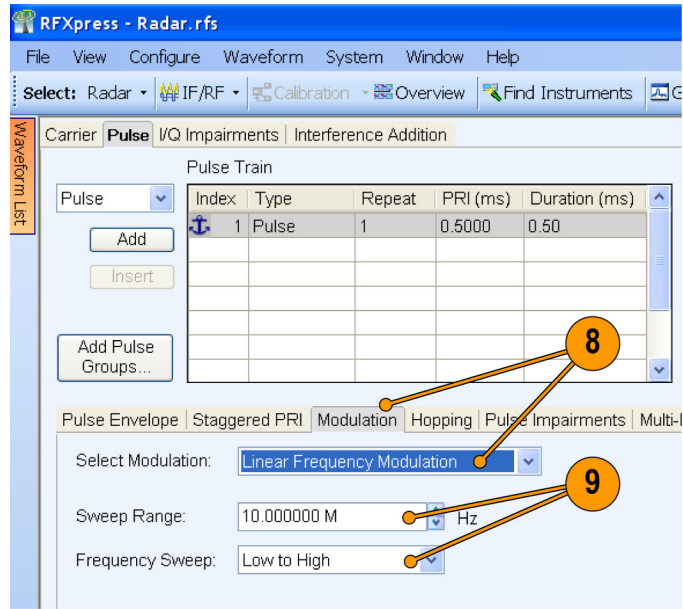


0159-236

8. Click the **Modulation** tab and set **Select Modulation** to Linear Frequency Modulation.

9. Set the following:

- **Sweep Range** to 10 MHz.
- **Frequency Sweep** to Low to High.



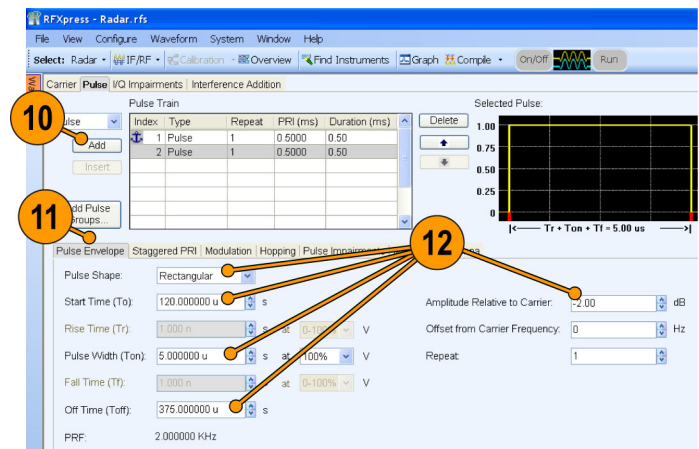
0159-237

10. Click **Add** to add a pulse. Select the newly added pulse.

11. Select the **Pulse Envelope** tab.

12. Select the pulse and set the following:

- **Pulse Shape** to Rectangular.
- **Start Time** to 120  $\mu$ s.
- **Pulse Width** to 5  $\mu$ s at 100%.
- **Off Time** to 375  $\mu$ s.
- **Amplitude Relative to Carrier** to -2 dB.

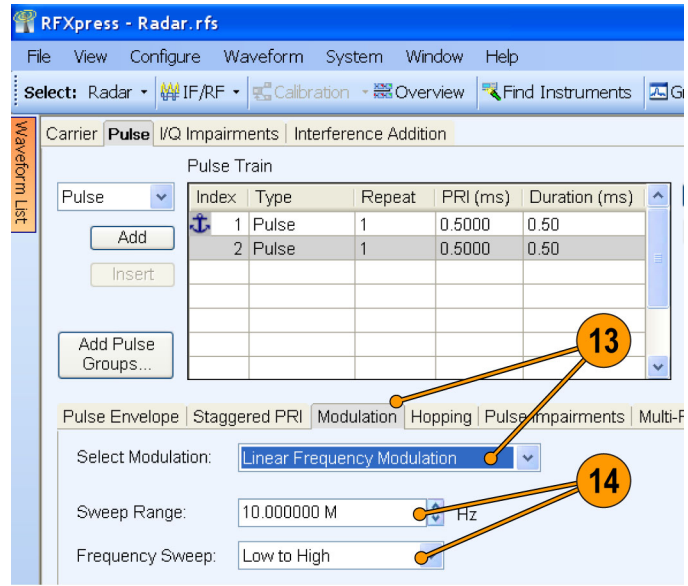


0159-238

13. Click the **Modulation** tab and set **Select Modulation** to Linear Frequency Modulation.

14. Set the following:

- **Sweep Range** to 10 MHz.
- **Frequency Sweep** to Low to High.



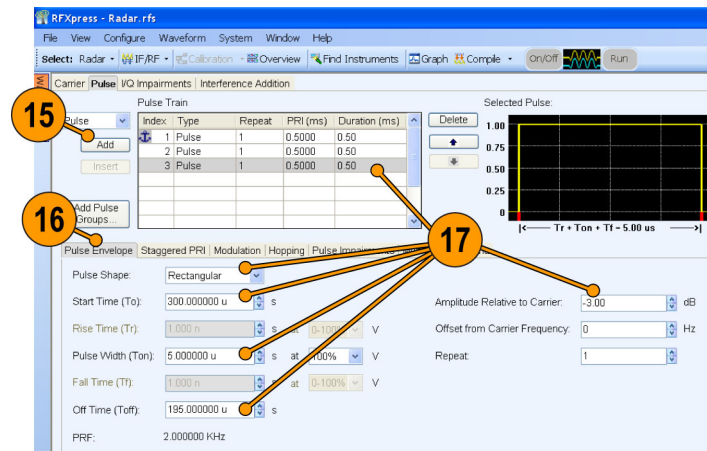
0159-239

15. Click **Add** to add a pulse.

16. Select the **Pulse Envelope** tab.

17. Select the pulse and set the following:

- **Pulse Shape** to Rectangular.
- **Start Time** to 300  $\mu$ s.
- **Pulse Width** to 5  $\mu$ s at 100%.
- **Off Time** to 195  $\mu$ s.
- **Amplitude Relative to Carrier** to -3 dB.



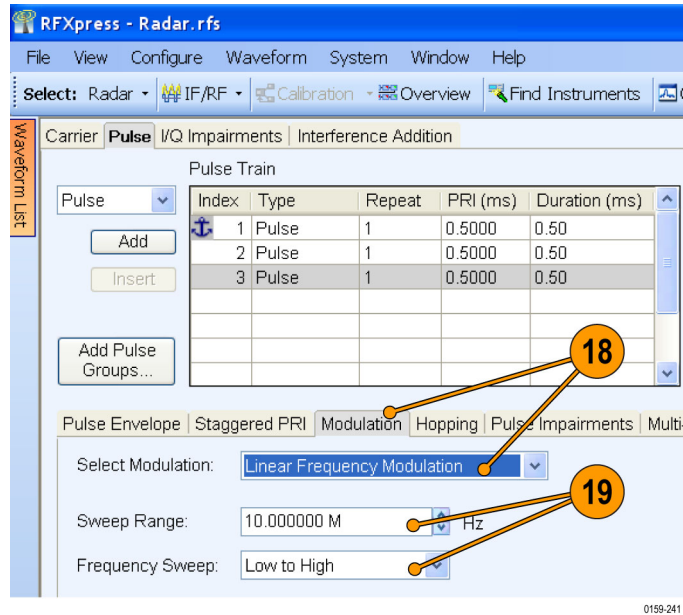
0159-240

18. Click the **Modulation** tab and set **Select Modulation** to Linear Frequency Modulation.

19. Set the following:

- **Sweep Range** to 10 MHz.
- **Frequency Sweep** to Low to High.

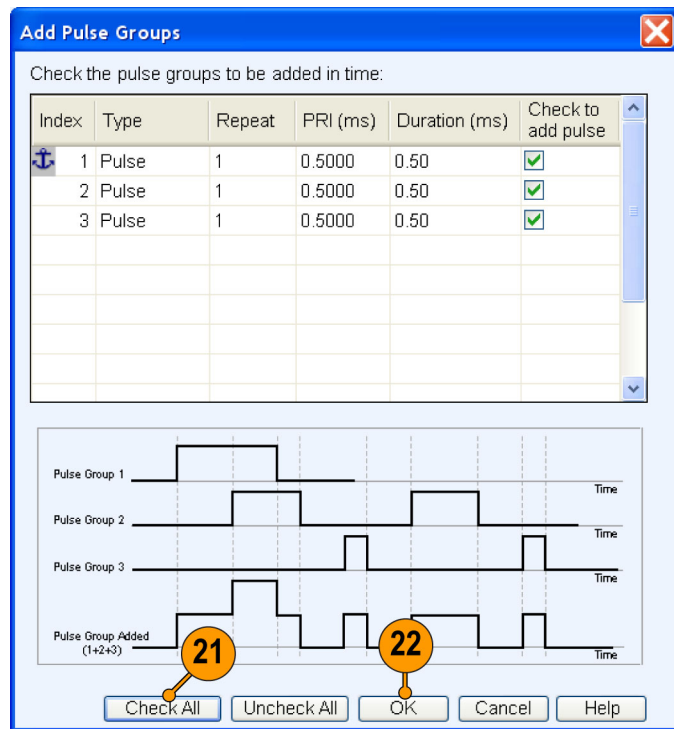
20. Click **Add Pulse Groups**.



0159-241

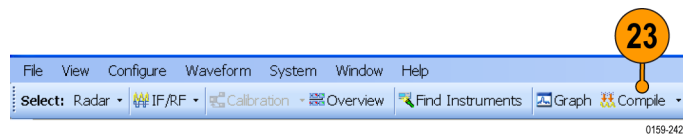
21. Click **Check All**.

22. Click **OK**.



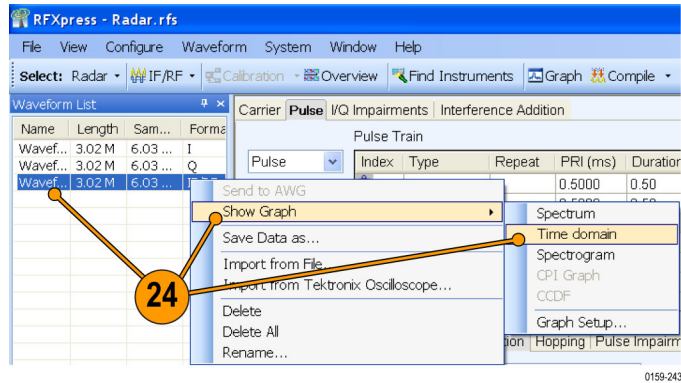
0159-280

23. From the toolbar, click **Compile**.

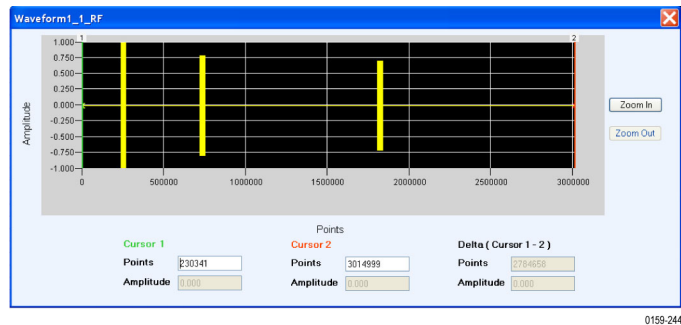


0159-242

24. Select an IF/RF waveform from the waveform list. Right-click and select **Show Graph > Time domain**.



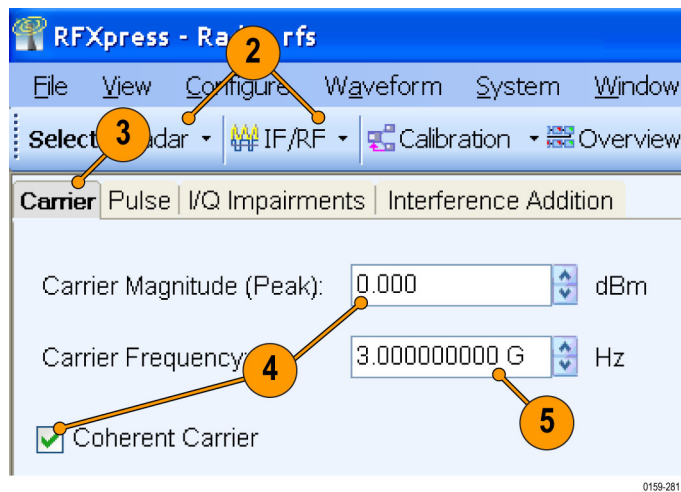
25. The time domain graphs are as shown.



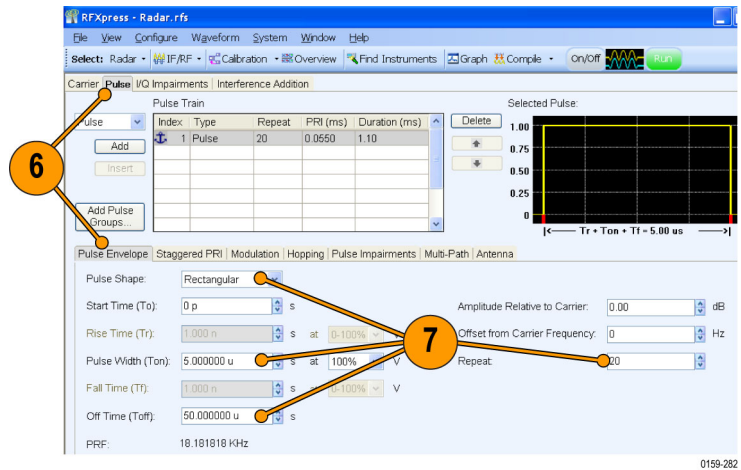
## Simulating a Scanning Antenna with a Gaussian Shape

RFXpress can be used to simulate different types of beam patterns like Sinc, Gaussian, or User-defined scan patterns. In this example, you will simulate a Gaussian Beam pattern for a stationary target with Maximum Radial Axis (MRA) at 0 degrees.

1. Start RFXpress.
2. From the toolbar, click **Select > Radar**. Select the signal type as **IF/RF**.
3. Click the **Carrier** tab.

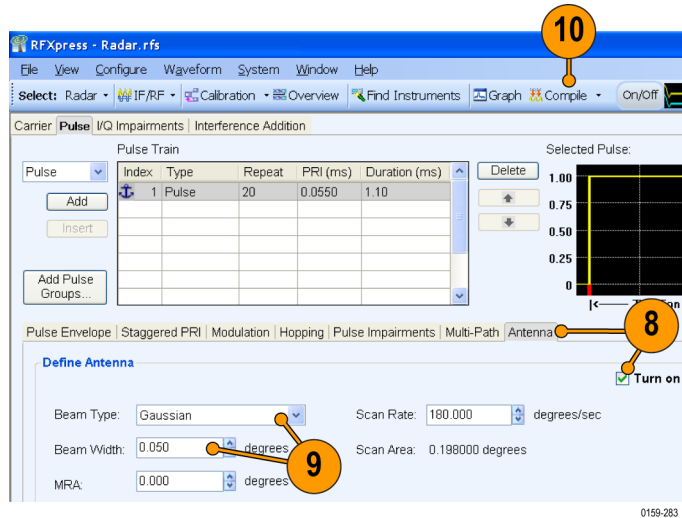


4. Leave the defaults for **Coherent Carrier** (enabled) and **Carrier Magnitude (Peak)**.
5. Set the **Carrier Frequency** to 3 GHz.
6. Select the **Pulse** tab and select the **Pulse Envelope** tab.



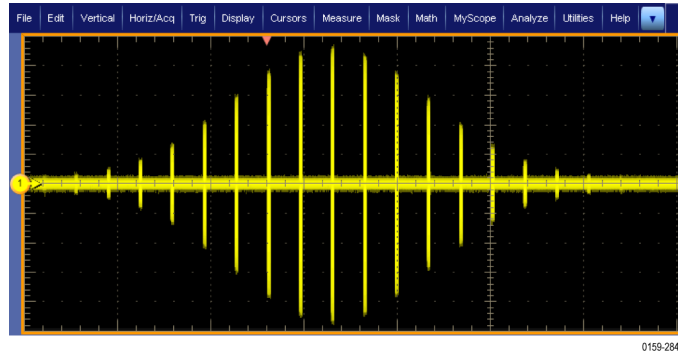
7. Set the following:
  - **Pulse Shape** to Rectangular.
  - **Pulse Width** to 5  $\mu$ s.
  - **Off Time** to 50  $\mu$ s.
  - **Repeat** to 20.
8. Click the **Antenna** tab and click Turn On.

9. Set the following:
  - **Beam Type** to Gaussian.
  - **Beam Width** to 0.05  $^{\circ}$ .



10. From the toolbar, click **Compile**.

11. Capture the waveform on the oscilloscope and observe the signal spectrum using Tektronix Ultra Wideband Spectral Analysis software.







# Index

## A

- Add pulse groups, 64
- Adding
  - impairments, 6
  - interference, 6, 12, 43, 47
  - power ramping, 6
- Alpha/B\*T, 4
- Amplitude, 4, 12, 33, 45, 47
- Amplitude relative to carrier, 50, 53, 61, 62, 63
- Anchor
  - carrier, 36
- Antenna, vi, 66
  - Gaussian, 65
- Arbitrary waveform generator
  - AWG7122B, 14, 20, 25, 44
- Automatic, 15, 51
- Average, 26, 45
- AWG
  - sequence mode, vi

## B

- Band group, 45, 46
- Bands, 45
- Base data, 6
  - PRBS, 14
- Base frequency, 5, 39
- Baseband offset, 4
- Baseband signal, 10
- Baseband signals
  - I, Q, v
  - IQ, 3
- Beam type, 66
- Beam width, 66

## C

- C/I, 12
- Calibrate, 45
- Calibration, 14, 16, 22, 44
  - imported signal, 20
- Carrier
  - frequency, 49, 52, 56, 59, 61, 66
  - magnitude (peak), 49, 52, 56, 59, 61, 66
  - offset, 12

- Carrier spacing, 5, 39
- Closing the software, 1
- Coherent carrier, 49, 52, 56, 59, 61, 66
- Compile, 13, 19, 30, 34, 39, 40, 41, 43, 46, 48, 51, 58, 60, 64, 66
  - setting, 8
- Compile settings, 4, 8, 14, 36, 39, 46, 50, 54
- Conformance, 47
- Correction file, 17, 23, 45, 46
  - calibration, v
  - path, 45
- Correction files, 15

## D

- DAC resolution, 26
- Delay, 33
- Documentation, vi
- DUT characterization, v, 25
  - wizard, 25

## E

- End frequency, 17, 23, 26
- EVM, 16, 20
- Exit, 1

## F

- Fall time, 53
- File
  - import, 10
  - iq, 10, 11
  - sample rate, 11
- Filter, 4
- Frequency, 12, 47
- Frequency offset, 54
- Frequency resolution, 17, 26
- Frequency sweep, 50, 62, 63, 64
- Full bandwidth, 40

## G

- Gated noise, v, 43
- Generic signal, 3, 14, 20, 38
  - IF/RF, 10

## Graphs, 9

- CCDF, 9
- constellation, 9, 31
- I & Q, 13, 31
- pulse shape, 34
- spectrogram, 37, 55, 58
- spectrum, 9, 13, 31, 48
- time domain, 43, 51, 60, 65

## H

- Hopping, 35, 36
  - pulse-to-pulse, 54
- Hopping pattern, 30
  - user defined, 43

## I

- I/Q Impairments tab, 7
- IF/RF, 33, 35, 38, 47, 51, 55, 59, 61, 65
- Impairments, v, 6
  - adding, 6
  - real-world, 47
- Import from file, 10, 21
  - RTSA file, 10
- Input file
  - sample rate, 11
- Installation, 1
- Interference, v, 6, 43
  - adding, 6, 43
  - sinusoidal, 12
- Interference Addition tab, 8, 12, 43, 47
- Interleave, 26, 45

## K

- Key features
  - baseband, v
  - radar, vi
  - UWB-WiMedia, v

## M

- Manuals, vi
  - RFXpress RFX100
    - Installation, vi, 1
  - RFXpress RFX100 User, vi

Modulation, 4, 6, 50, 53, 57, 62, 63, 64  
    duration, 57  
    frequency, 57  
Multit-carrier, 38  
Multipath tab, 33  
Multi-Carrier  
    add carrier, 5  
Multi-Carrier signals, v  
    RF, 5  
Multipath  
    simulating, 33

## O

Off time, 50, 53, 57, 59, 61, 62, 63, 66  
Offset from carrier, 12  
Offset from carrier frequency, 50, 53  
Online help, vi  
Oscilloscope, 14, 20  
    DPO70804, 44  
    DPO72004, 25  
Oversampling, 8

## P

Packets, 43  
Phase, 33  
PLCP Header, 43  
Power ramping, 6, 43  
    adding, 6  
Power ramping tab, 6  
Preface, v  
Previewing Graphs, 9  
PRF, 50, 53

PRI, 50, 53  
Pulse  
    envelope, 50, 53, 57, 59, 61, 62, 63, 66  
    shape, 50, 53, 57, 59, 61, 62, 63, 66  
    width, 50, 53, 57, 59, 61, 62, 63, 66  
Pulse hopping, vi

## R

Range, 5, 39  
Real-time spectrum analyzer, v  
Repeat, 50, 53, 59, 66  
Rise time, 53

## S

S-parameter, v, 38  
S-Parameters tab, 40, 41  
Safety Summary, iii  
Sampling rate, 26, 45  
Scanning  
    antenna, 65  
Setup tab, 6  
Signal  
    compiling, 4  
    generating, 3  
    previewing, 9  
Signal type  
    IQ, 3  
    RF, 5, 16, 45  
Single carrier signals, v  
    generating, 3  
Software upgrades, 1

Spectrogram, 37  
Staggered PRI, 60  
    type, 60  
Start frequency, 17, 23, 26  
Start time, 50, 53, 61, 62, 63  
Starting the software, 1  
Sub-carrier modulation, v  
Sweep range, 50, 62, 63, 64  
Symbol rate, 4

## T

TF Code  
    user defined, 42

## U

UWB, v  
UWB-WiMedia, v, 30, 42, 44  
    conformance mode, 30  
    custom mode, 42

## W

Waveform length  
    automatic, 36  
Waveform list, 5, 43  
WiFi signal, 47  
WiMedia spec example packet, 30, 42  
WiMedia specification, vi  
Window, 4